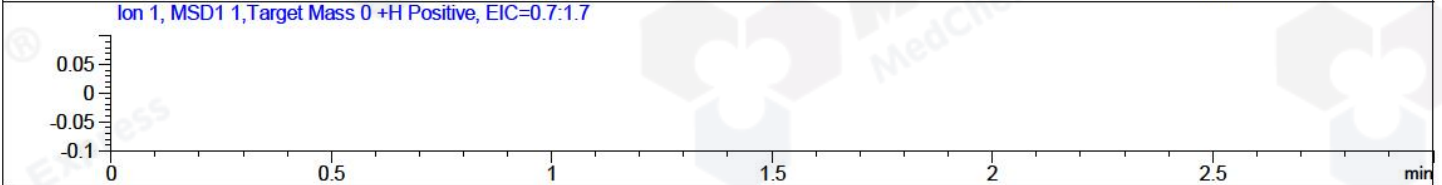
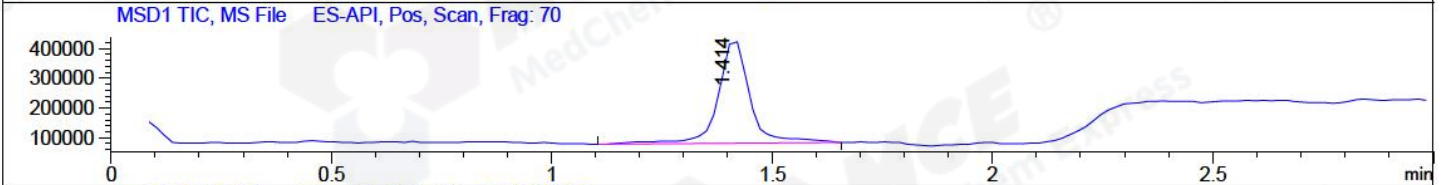
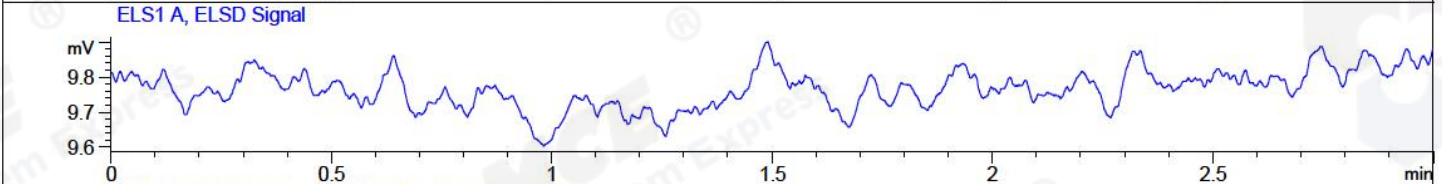
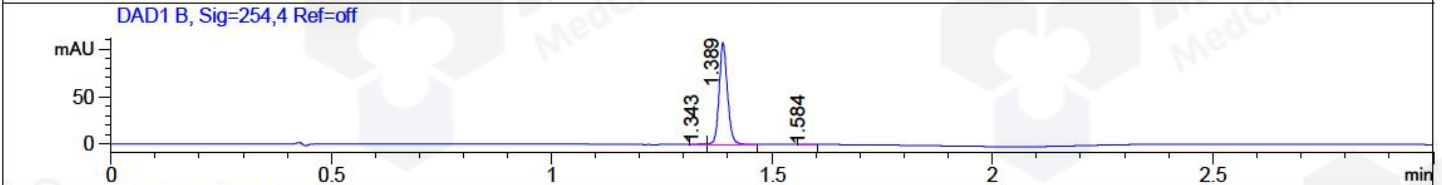
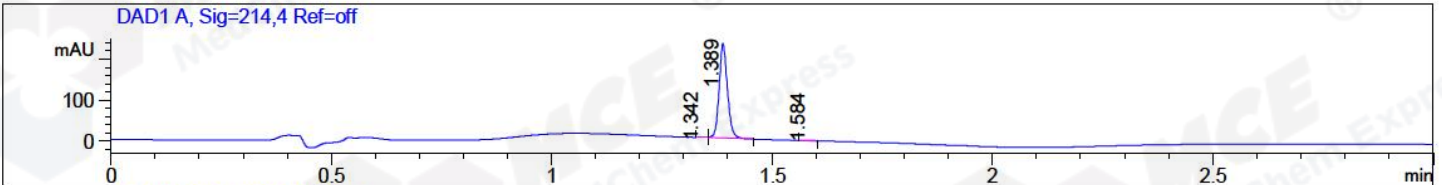


File ..Data\2018\20181227\20181227\ZFX5725-001-4.D Tgt Mass (CHM):
 Injection Date : 27 Dec 18 12:36 pm +0800 Seq. Line : 46
 Sample Name : ZFX5725-001-4 Location : P1-D-03
 Acq. Operator : SYSTEM Inj : 1
 Spec. Reported : MS Integration Inj Volume : 1 ul
 Acq. Method : D:\LCMS03\Data\2018\20181227\20181227\1-POS-3MIN.M
 Analysis Method : D:\LCMS03\Data\2018\20181227\20181227\1-POS-3MIN.M
 Catalog No : HY-12871 Batch#36062
 Method Info : Mobile Phase: A: water(0.01%TFA) B:ACN(0.01%TFA)
 Gradient: 5% to 95%B within 1.3 min
 Flow Rate :1.8ml/min
 Column :SunFire C18, 4.6*50mm,3.5um A-RP-186
 Oven Temperature : 45C



Integration Results for DAD1 A, Sig=214,4 Ref=off

RetTim	Width	Area	Height	Area%	MS (+)
1.34	0.02	2.72	2.23	0.89	414
1.39	0.02	301.57	230.66	98.48	388
1.58	0.03	1.94	1.02	0.64	130

Integration Results for DAD1 B, Sig=254,4 Ref=off

RetTim	Width	Area	Height	Area%	MS (+)
1.34	0.02	1.39	1.06	0.97	130
1.39	0.02	141.47	107.84	98.83	388
1.58	0.02	0.28	0.24	0.20	130

Integration Results for ELS1 A, ELSD Signal

RetTim	Width	Area	Height	Area%	MS (+)

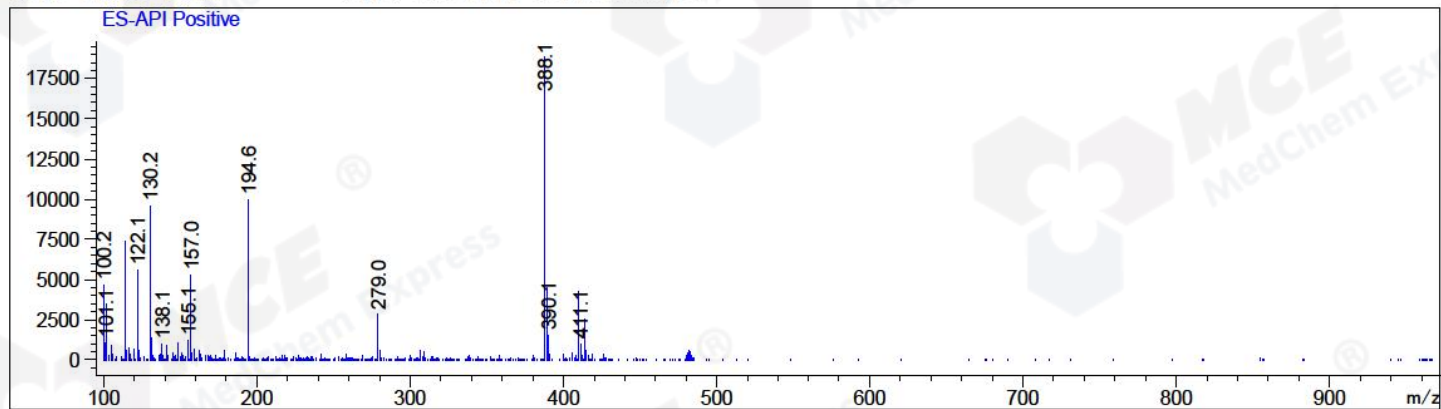
Integration Results for MSD1 TIC, MS File

-----|-----|-----|-----|-----|-----|
1.41 0.07 1704646.50 351293.94 100.00 388

RetTim	Width	Area	Height	Area%	MS (+)
--------	-------	------	--------	-------	--------

Ret. Time: 1.41

<<<< POSITIVE SPECTRA >>>>



*** End of Report ***