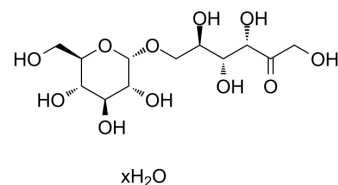


## Isomaltulose hydrate

Cat. No.:	HY-128739		
CAS No.:	343336-76-5		
Target:	Endogenous Metabolite		
Pathway:	Metabolic Enzyme/Protease		
Storage:	Powder	-20°C	3 years
		4°C	2 years
	In solvent	-80°C	6 months
		-20°C	1 month



### SOLVENT & SOLUBILITY

In Vitro	DMSO : 125 mg/mL (Need ultrasonic) H <sub>2</sub> O : 100 mg/mL (Need ultrasonic)
In Vivo	<ol style="list-style-type: none"> <li>Add each solvent one by one: 10% DMSO &gt;&gt; 40% PEG300 &gt;&gt; 5% Tween-80 &gt;&gt; 45% saline Solubility: ≥ 2.08 mg/mL (Infinity mM); Clear solution</li> <li>Add each solvent one by one: 10% DMSO &gt;&gt; 90% (20% SBE-β-CD in saline) Solubility: ≥ 2.08 mg/mL (Infinity mM); Clear solution</li> <li>Add each solvent one by one: 10% DMSO &gt;&gt; 90% corn oil Solubility: ≥ 2.08 mg/mL (Infinity mM); Clear solution</li> </ol>

### BIOLOGICAL ACTIVITY

Description	Isomaltulose hydrate is an endogenous metabolite.
-------------	---

**Caution: Product has not been fully validated for medical applications. For research use only.**

Tel: 609-228-6898

Fax: 609-228-5909

E-mail: tech@MedChemExpress.com

Address: 1 Deer Park Dr, Suite Q, Monmouth Junction, NJ 08852, USA