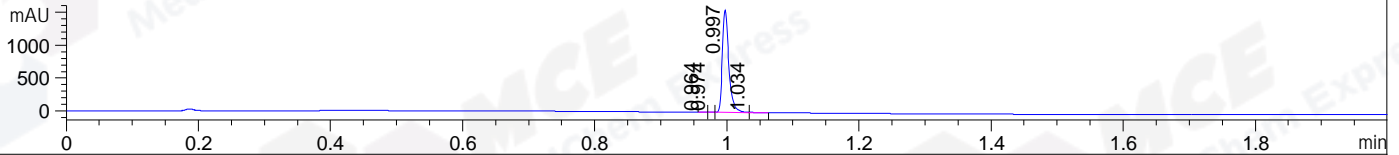
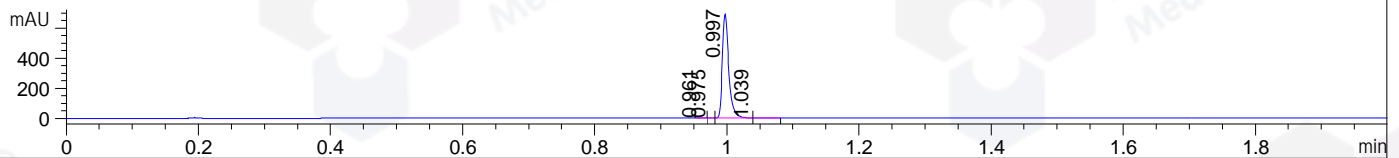


File ..200312 2020-03-12 08-59-04\CJ7613-005-11Z.D Tgt Mass (CHM):
 Injection Date : 12 Mar 20 1:27 pm +0800 Seq. Line : 61
 Sample Name : CJ7613-005-11Z Location : P1-E-09
 Acq. Operator : SYSTEM Inj : 1
 Spec. Reported : MS Integration Inj Volume : 0.2 ul
 Acq. Method : D:\LCMS03\Data\20200312\20200312 2020-03-12 08-59-04\1-POS-UPLC2.0MIN(0.8ML)
 Analysis Method : D:\LCMS03\Data\20200312\20200312 2020-03-12 08-59-04\1-POS-UPLC2.0MIN(0.8ML) .1
 Catalog No : HY-128756 Batch#61728
 Method Info : Mobile Phase: A: water(0.01%TFA) B:ACN(0.01%TFA)
 Gradient: 5% to 95%B within 0.6 min
 Flow Rate :0.8ml/min
 Column :Poroshell 120 EC- C18, 2.1*50mm,1.9um A-RP-463
 Oven Temperature : 45C

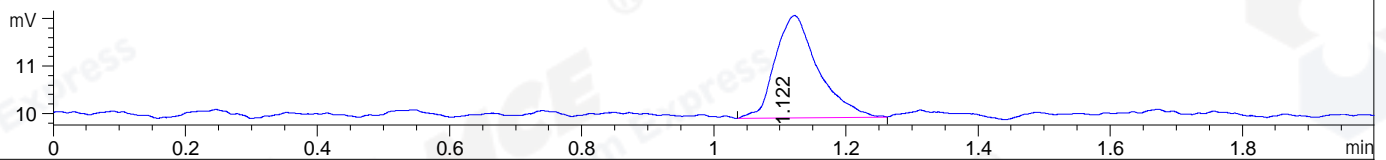
DAD1 A, Sig=214,4 Ref=off



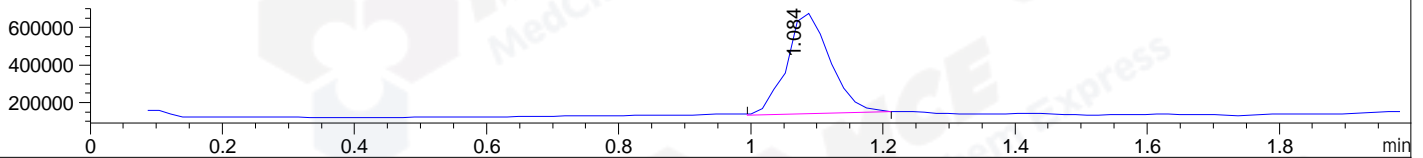
DAD1 B, Sig=254,4 Ref=off



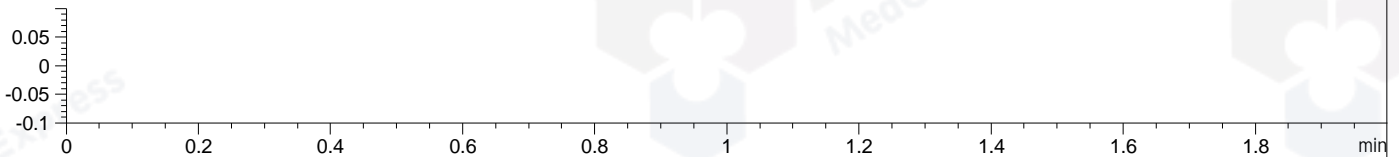
ELS1 A, ELSD Signal



MSD1 TIC, MS File ES-API, Pos, Scan, Frag: 70



Ion 1, MSD1 1, Target Mass 0 +H Positive, EIC=0.7:1.7



Integration Results for DAD1 A, Sig=214,4 Ref=off

RetTim	Width	Area	Height	Area%	MS (+)
0.96	0.01	1.57	2.63	0.15	114
0.97	0.01	1.13	1.98	0.11	114
1.00	0.01	1050.64	1561.74	99.54	114
1.03	0.01	2.14	3.70	0.20	507

Integration Results for DAD1 B, Sig=254,4 Ref=off

RetTim	Width	Area	Height	Area%	MS (+)
0.96	0.01	0.68	1.20	0.14	114
0.98	0.01	0.74	1.21	0.16	114
1.00	0.01	464.32	692.52	99.48	114
1.04	0.01	1.03	1.23	0.22	507

Integration Results for ELS1 A, ELSD Signal

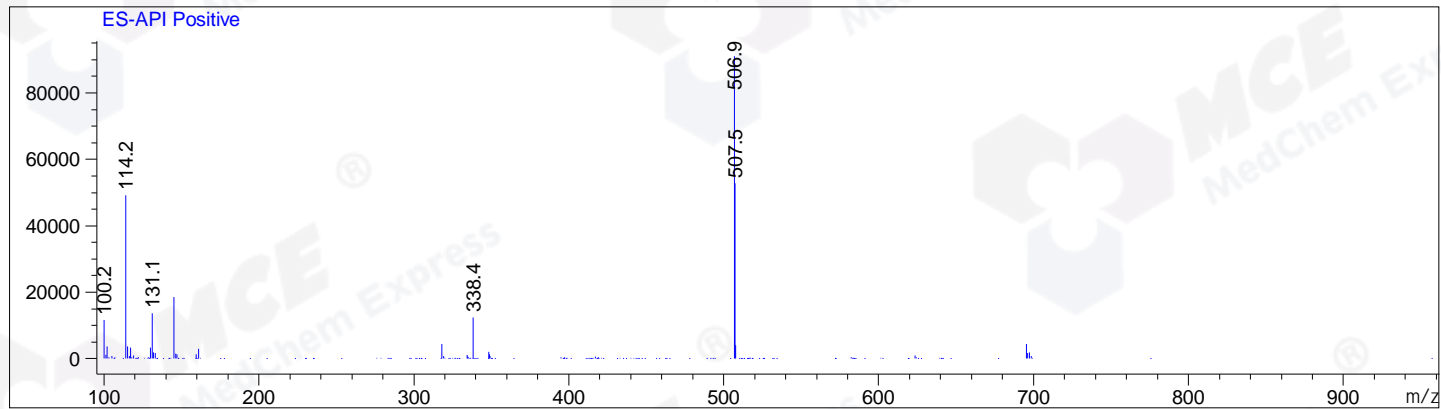
RetTim	Width	Area	Height	Area%	MS (+)
1.12	0.06	9.76	2.16	100.00	507

Integration Results for MSD1 TIC, MS File

RetTim	Width	Area	Height	Area%	MS (+)
1.08	0.07	2434242.75	544115.81	100.00	507

Ret. Time: 1.08

<<<< POSITIVE SPECTRA >>>>



*** End of Report ***