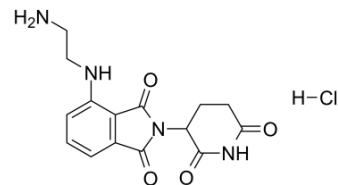


Pomalidomide-C2-NH₂ hydrochloride

Cat. No.:	HY-128846A		
CAS No.:	2305369-00-8		
Molecular Formula:	C ₁₅ H ₁₇ ClN ₄ O ₄		
Molecular Weight:	352.77		
Target:	E3 Ligase Ligand-Linker Conjugate		
Pathway:	PROTAC		
Storage:	Powder	-20°C	3 years
		4°C	2 years
	In solvent	-80°C	6 months
		-20°C	1 month



SOLVENT & SOLUBILITY

In Vitro

DMSO : 125 mg/mL (354.34 mM; Need ultrasonic)

Preparing Stock Solutions	Solvent Concentration	Mass		
		1 mg	5 mg	10 mg
	1 mM	2.8347 mL	14.1735 mL	28.3471 mL
	5 mM	0.5669 mL	2.8347 mL	5.6694 mL
	10 mM	0.2835 mL	1.4174 mL	2.8347 mL

Please refer to the solubility information to select the appropriate solvent.

BIOLOGICAL ACTIVITY

Description

Pomalidomide-C2-NH₂ hydrochloride is a synthesized E3 ligase ligand-linker conjugate that incorporates the Pomalidomide based cereblon ligand and a linker used in PROTAC technology.

IC₅₀ & Target

Cereblon

REFERENCES

[1]. Shibata N, et al. Development of Protein Degradation Inducers of Androgen Receptor by Conjugation of Androgen Receptor Ligands and Inhibitor of Apoptosis Protein Ligands. *J Med Chem.* 2018 Jan 25;61(2):543-575.

Caution: Product has not been fully validated for medical applications. For research use only.

Tel: 609-228-6898

Fax: 609-228-5909

E-mail: tech@MedChemExpress.com

Address: 1 Deer Park Dr, Suite Q, Monmouth Junction, NJ 08852, USA