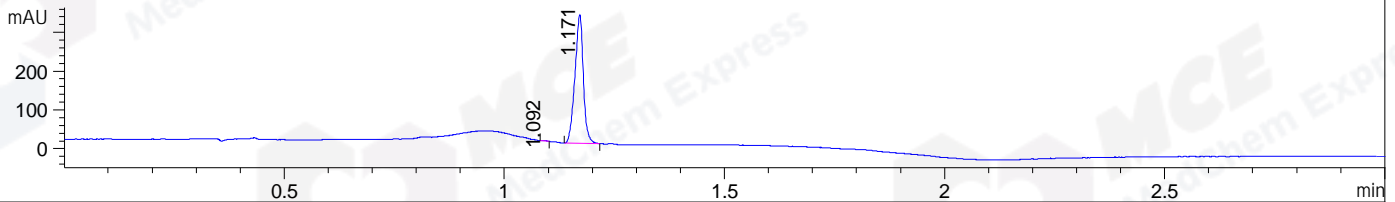
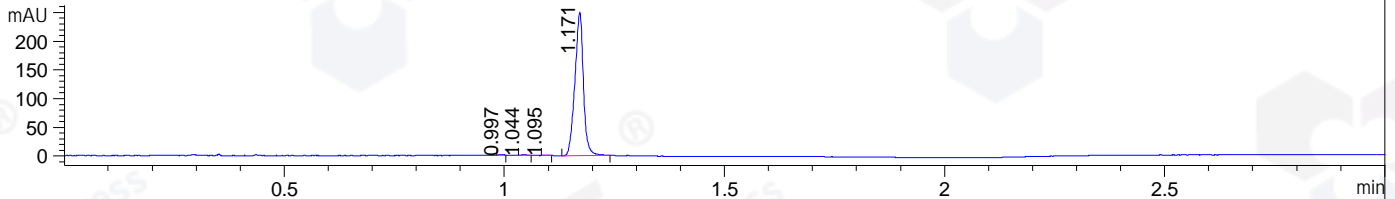


File ..2\1\DATA\2020\20200604\985\ZFX7437-017-A1.D Tgt Mass (CHM):
Injection Date : 4 Jun 20 7:07 pm +0800 Seq. Line : 120
Sample Name : ZFX7437-017-A1 Location : P1-D-03
Acq. Operator : ZJ_1432 Inj : 1
Spec. Reported : MS Integration Inj Volume : 0.5 ul
Acq. Method : D:\Chem32\1\data\2020\20200604\985\1-POS-3MIN.M
Analysis Method : D:\CHEM32\1\DATA\2020\20200604\985\1-POS-3MIN.M
Catalog No : HY-12885
Method Info : Mobile Phase: A: water(0.01%TFA) B:ACN(0.01%TFA)
Gradient: 5% to 95%B within 1.3 min
Flow Rate :1.8ml/min
Column :SunFire C18, 4.6*50mm,3.5um A-RP-607
Oven Temperature : 45□

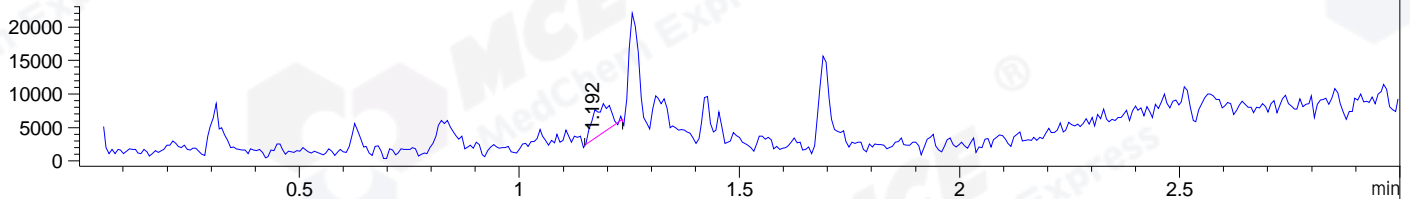
DAD1 B, Sig=214,4 Ref=off



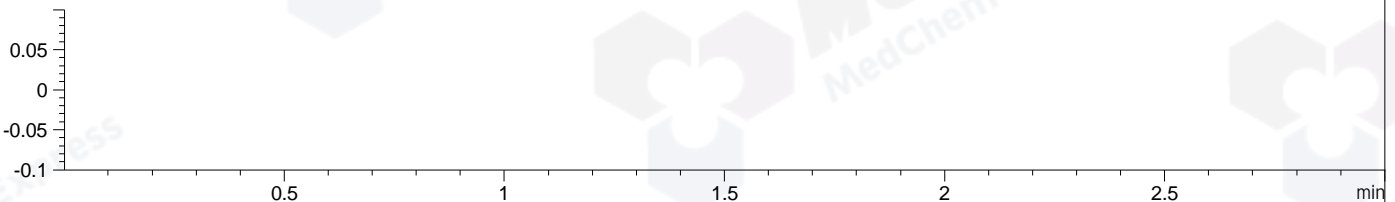
DAD1 C, Sig=254,4 Ref=off



MSD1 TIC, MS File ES-API, Pos, Scan, Frag: 70



Ion 1, MSD1 1, Target Mass 0 +H Positive, EIC=0.7:1.7



Integration Results for DAD1 B, Sig=214,4 Ref=off

RetTim	Width	Area	Height	Area%	MS (+)
1.09	0.01	0.87	1.41	0.20	ND
1.17	0.02	442.23	332.99	99.80	691

Integration Results for DAD1 C, Sig=254,4 Ref=off

RetTim	Width	Area	Height	Area%	MS (+)
1.00	0.01	0.34	0.40	0.10	ND
1.04	0.01	0.72	0.87	0.21	ND
1.09	0.01	0.51	0.73	0.15	ND
1.17	0.02	335.09	249.98	99.53	691

Integration Results for MSD1 TIC, MS File

RetTim	Width	Area	Height	Area%	MS (+)
1.19	0.04	11949.65	4556.98	100.00	691

Ret. Time: 1.19

<<<< POSITIVE SPECTRA >>>>

ES-API Positive

