

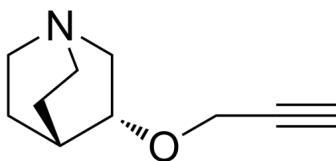
Talsaclidine

Cat. No.: HY-128855
Batch No.: 409985
CAS No.: 147025-53-4
Molecular Formula: C₁₀H₁₅NO

ANALYTICAL DATA

Theoretical: C(72.69%)、H(9.15%)、N(8.48%)
Result: C(70.35%)、H(9.71%)、N(8.82%)

Chemical Structure:



Caution: Product has not been fully validated for medical applications. For research use only.

Tel: 609-228-6898

Fax: 609-228-5909

E-mail: tech@MedChemExpress.com

Address: 1 Deer Park Dr, Suite Q, Monmouth Junction, NJ 08852, USA