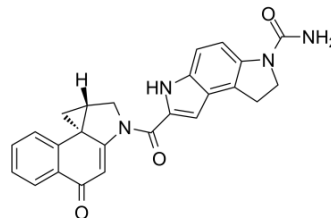


(+)-CBI-CDPI1

| | |
|--------------------|---|
| Cat. No.: | HY-128880 |
| CAS No.: | 128300-14-1 |
| Molecular Formula: | C ₂₅ H ₂₀ N ₄ O ₃ |
| Molecular Weight: | 424.45 |
| Target: | ADC Cytotoxin; DNA Alkylator/Crosslinker |
| Pathway: | Antibody-drug Conjugate/ADC Related; Cell Cycle/DNA Damage |
| Storage: | Please store the product under the recommended conditions in the COA. |



BIOLOGICAL ACTIVITY

Description

(+)-CBI-CDPI1 is an enhanced functional analog of CC-1065. (+)-CBI-CDPI1 is a DNA alkylating agent. (+)-CBI-CDPI1 is an antibody drug conjugates (ADCs) toxin.

REFERENCES

[1]. Boger DL, et al. Molecular basis for sequence selective DNA alkylation by (+)- and ent(-)-CC-1065 and related agents: alkylation site models that accommodate the offset AT-rich adenine N3 alkylation selectivity. *Bioorg Med Chem.* 1994 Feb;2(2):115-35.

Caution: Product has not been fully validated for medical applications. For research use only.

Tel: 609-228-6898

Fax: 609-228-5909

E-mail: tech@MedChemExpress.com

Address: 1 Deer Park Dr, Suite Q, Monmouth Junction, NJ 08852, USA