

File ..1\DATA\2019\20190925\720\BIZ2019-924-CXL9.D Tgt Mass (CHM):

Injection Date : 25 Sep 19 12:47 pm +0800 Seq. Line : 54

Sample Name : BIZ2019-924-CXL9 Location : PL-B-06

Acq. Operator : bgd_1571 Inj : 1

Spec. Reported : MS Integration Inj Volume : 1 ul

Acq. Method : D:\Chem32\1\data\2019\20190925\720\1-POS-3MIN.M

Analysis Method : D:\CHEM32\1\DATA\2019\20190925\720\1-POS-3MIN.M

Catalog No : HY-128892 Batch#46165

Method Info : Mobile Phase: A: water(0.01%TFA) B:ACN(0.01%TFA)

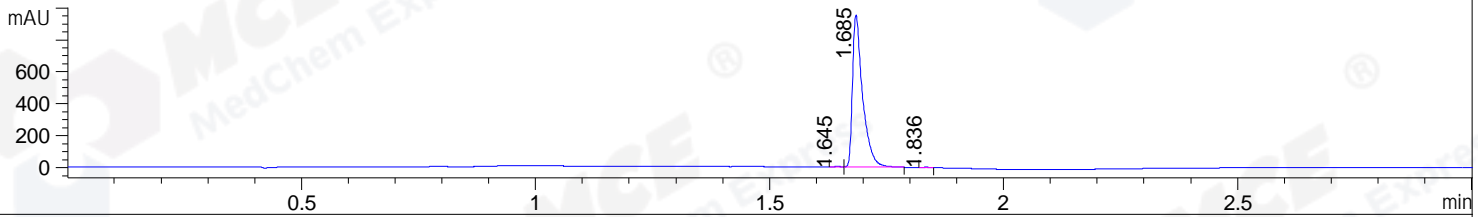
Gradient: 5% to 95%B within 1.3 min

Flow Rate :1.8ml/min

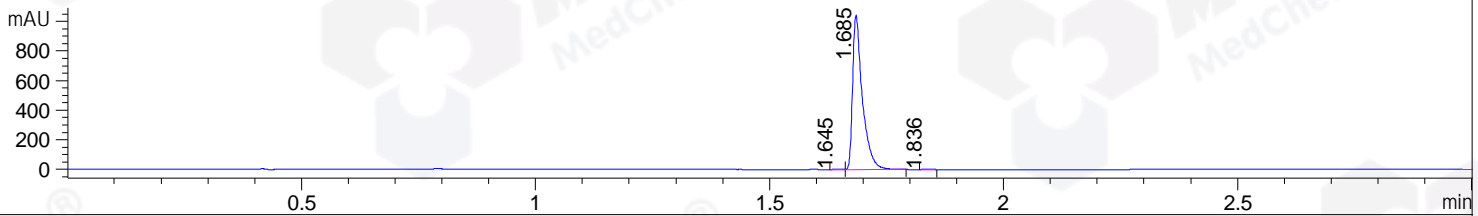
Column :SunFire C18, 4.6*50mm,3.5um A-RP-433

Oven Temperature : 45

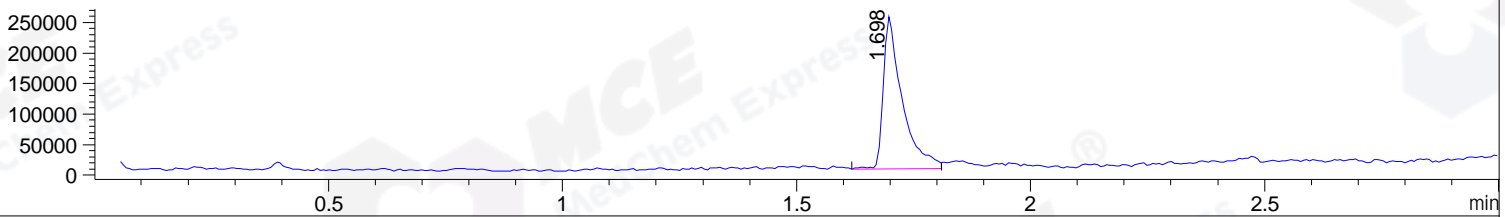
DAD1 B, Sig=214,4 Ref=off



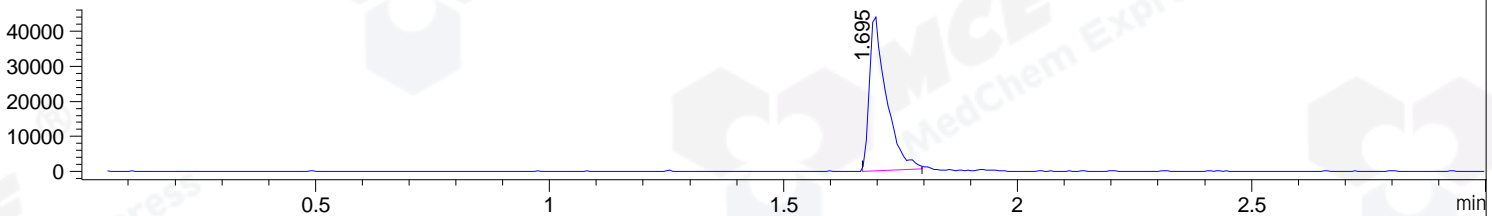
DAD1 C, Sig=254,4 Ref=off



MSD1 TIC, MS File ES-API, Pos, Scan, Frag: 70



Ion 369.11, MSD1 369.11, Target Mass 368.11 +H Positive, EIC=368.81:369.81



Integration Results for DAD1 B, Sig=214,4 Ref=off

RetTim	Width	Area	Height	Area%	MS (+)
1.64	0.02	3.62	2.99	0.25	235
1.68	0.02	1426.44	952.44	99.58	759
1.84	0.02	2.36	2.53	0.16	391

Integration Results for DAD1 C, Sig=254,4 Ref=off

RetTim	Width	Area	Height	Area%	MS (+)
1.65	0.02	2.20	1.97	0.15	235
1.68	0.02	1510.02	1044.06	99.60	759
1.84	0.02	3.81	3.58	0.25	391

Integration Results for MSD1 TIC, MS File

RetTim	Width	Area	Height	Area%	MS (+)
1.70	0.04	699669.06	250498.77	100.00	759

Ret. Time: 1.70

<<<< POSITIVE SPECTRA >>>>

ES-API Positive

