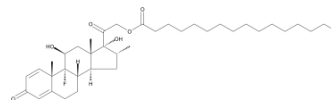


## Dexamethasone palmitate

Cat. No.:	HY-128922		
CAS No.:	14899-36-6		
Molecular Formula:	C <sub>38</sub> H <sub>59</sub> FO <sub>6</sub>		
Molecular Weight:	630.87		
Target:	Glucocorticoid Receptor		
Pathway:	GPCR/G Protein		
Storage:	Powder	-20°C	3 years
		4°C	2 years
	In solvent	-80°C	6 months
		-20°C	1 month



### SOLVENT & SOLUBILITY

#### In Vitro

DMSO : 100 mg/mL (158.51 mM; Need ultrasonic)  
 H<sub>2</sub>O : < 0.1 mg/mL (insoluble)

Preparing Stock Solutions	Solvent Concentration	Mass		
		1 mg	5 mg	10 mg
	1 mM	1.5851 mL	7.9256 mL	15.8511 mL
	5 mM	0.3170 mL	1.5851 mL	3.1702 mL
	10 mM	0.1585 mL	0.7926 mL	1.5851 mL

Please refer to the solubility information to select the appropriate solvent.

#### In Vivo

- Add each solvent one by one: 10% DMSO >> 40% PEG300 >> 5% Tween-80 >> 45% saline  
 Solubility: ≥ 2.08 mg/mL (3.30 mM); Clear solution
- Add each solvent one by one: 10% DMSO >> 90% (20% SBE-β-CD in saline)  
 Solubility: 2.08 mg/mL (3.30 mM); Suspended solution; Need ultrasonic
- Add each solvent one by one: 10% DMSO >> 90% corn oil  
 Solubility: ≥ 2.08 mg/mL (3.30 mM); Clear solution

### BIOLOGICAL ACTIVITY

#### Description

Dexamethasone palmitate (DXP) is a prodrug of Dexamethasone, which is a glucocorticoid receptor agonist<sup>[1]</sup>. Dexamethasone palmitate (DXP) has a 47-fold lower affinity for the glucocorticoid receptor than Dexamethasone<sup>[2]</sup>. Anti-inflammatory agent.

### REFERENCES

---

[1]. Lorscheider M, et al. Dexamethasone palmitate nanoparticles: An efficient treatment for rheumatoid arthritis. J Control Release. 2019 Feb 28;296:179-189.

[2]. Daull P, et al. A preliminary evaluation of dexamethasone palmitate emulsion: a novel intravitreal sustained delivery of corticosteroid for treatment of macular edema. J Ocul Pharmacol Ther. 2013 Mar;29(2):258-69.

---

**Caution: Product has not been fully validated for medical applications. For research use only.**

Tel: 609-228-6898

Fax: 609-228-5909

E-mail: [tech@MedChemExpress.com](mailto:tech@MedChemExpress.com)

Address: 1 Deer Park Dr, Suite Q, Monmouth Junction, NJ 08852, USA