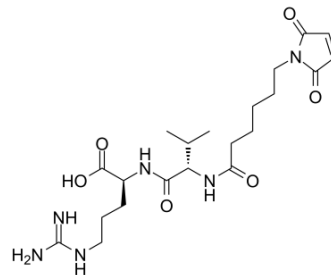


Mc-Leu-Gly-Arg

Cat. No.:	HY-128927
Molecular Formula:	C ₂₁ H ₃₄ N ₆ O ₆
Molecular Weight:	466.53
Target:	ADC Linker
Pathway:	Antibody-drug Conjugate/ADC Related
Storage:	Please store the product under the recommended conditions in the Certificate of Analysis.



BIOLOGICAL ACTIVITY

Description	Mc-Leu-Gly-Arg is a cleavable ether linker for antibody-drug conjugates (ADC) design.
IC₅₀ & Target	Cleavable

REFERENCES

[1]. Zhang D, et al. Immobilization of p-Aminobenzyl Ether Linker and Payload Potency and Stability Determine the Cell-Killing Activity of Antibody-Drug Conjugates with Phenol-Containing Payloads. *Bioconjug Chem.* 2018 Feb 21;29(2):267-274.

Caution: Product has not been fully validated for medical applications. For research use only.

Tel: 609-228-6898

Fax: 609-228-5909

E-mail: tech@MedChemExpress.com

Address: 1 Deer Park Dr, Suite Q, Monmouth Junction, NJ 08852, USA