

File ..00407 2020-04-07 12-40-28\JXY7460-043-1_1.D Tgt Mass (CHM):

Injection Date : 7 Apr 20 2:09 pm +0800 Seq. Line : 18

Sample Name : JXY7460-043-1 Location : PL-D-09

Acq. Operator : SYSTEM Inj : 1

Spec. Reported : MS Integration Inj Volume : 0.6 ul

Acq. Method : D:\LCMS03\Data\20200407\20200407 2020-04-07 12-40-28\1-POS-UPLC5.0MIN(0.8ML)

Analysis Method : D:\LCMS03\Data\20200407\20200407 2020-04-07 12-40-28\1-POS-UPLC5.0MIN(0.8ML)

Catalog No : HY-128943 Batch#62333

Method Info : Mobile Phase: A: water(0.01%TFA) B:ACN(0.01%TFA)

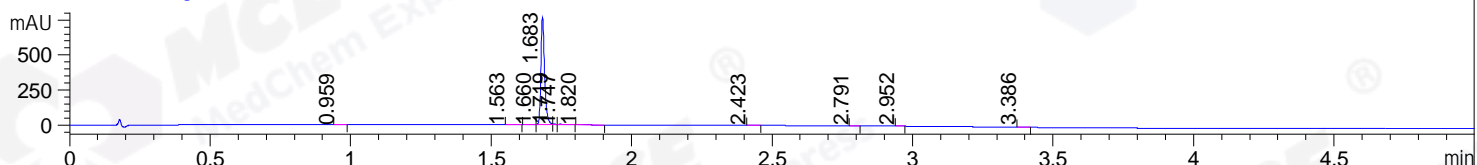
Gradient: 5% to 95%B within 3 min

Flow Rate :0.8ml/min

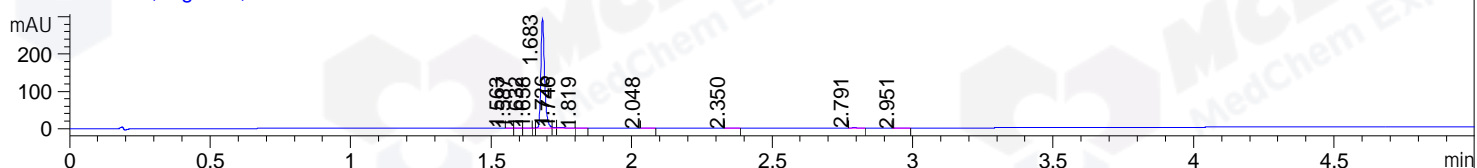
Column :Poroshell 120 EC- C18, 2.1*50mm,1.9um A-RP-530

Oven Temperature : 45C

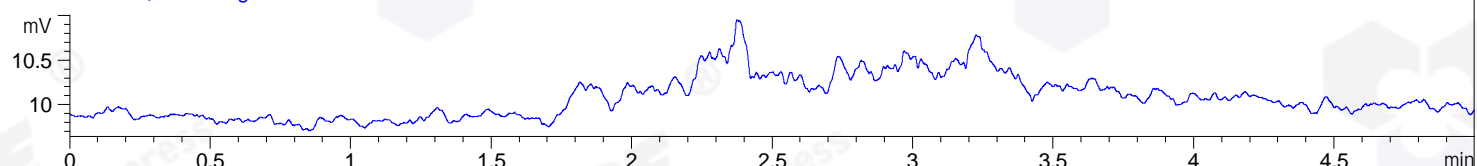
DAD1 A, Sig=214,4 Ref=off



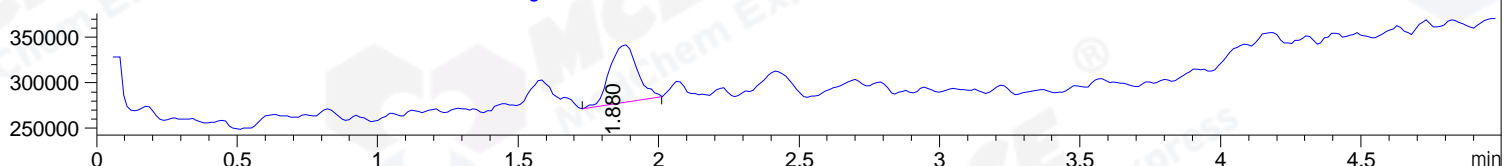
DAD1 B, Sig=254,4 Ref=off



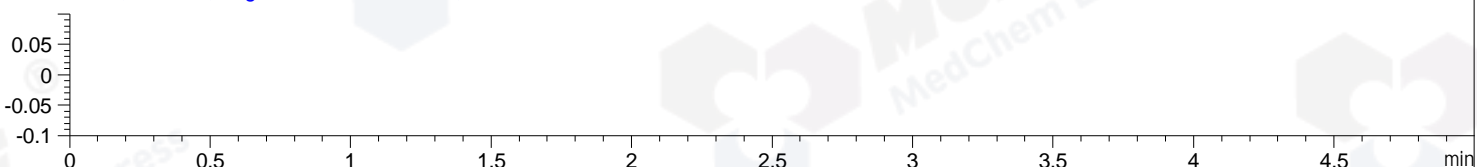
ELS1 A, ELSD Signal



MSD1 TIC, MS File ES-API, Pos, Scan, Frag: 70



Ion 1, MSD1 1, Target Mass 0 +H Positive, EIC=0.7:1.7



Integration Results for DAD1 A, Sig=214,4 Ref=off

RetTim	Width	Area	Height	Area%	MS(+)
0.96	0.02	0.56	0.47	0.08	83
1.56	0.01	1.43	1.45	0.20	83
1.66	0.03	2.95	1.94	0.40	83
1.68	0.02	708.99	766.49	97.14	83
1.72	0.01	4.20	6.36	0.57	83
1.75	0.03	7.28	4.49	1.00	83
1.82	0.02	0.93	0.74	0.13	83
2.42	0.01	0.48	0.55	0.07	83
2.79	0.02	0.49	0.54	0.07	83
2.95	0.01	0.83	0.96	0.11	83
3.39	0.01	1.71	2.01	0.23	83

Integration Results for DAD1 B, Sig=254,4 Ref=off

RetTim	Width	Area	Height	Area%	MS(+)
1.56	0.01	0.60	0.70	0.21	83
1.59	0.02	0.29	0.20	0.11	83
1.63	0.02	0.83	0.61	0.30	83

1.66	0.01	0.41	0.69	0.15	83
1.68	0.02	270.70	292.68	96.63	83
1.73	0.01	1.83	2.63	0.65	83
1.75	0.03	2.90	1.71	1.03	83
1.82	0.02	0.35	0.29	0.12	83
2.05	0.02	0.23	0.22	0.08	83
2.35	0.02	0.18	0.10	0.07	83
2.79	0.01	1.64	1.79	0.59	83
2.95	0.03	0.17	0.09	0.06	83

Integration Results for ELS1 A, ELSD Signal

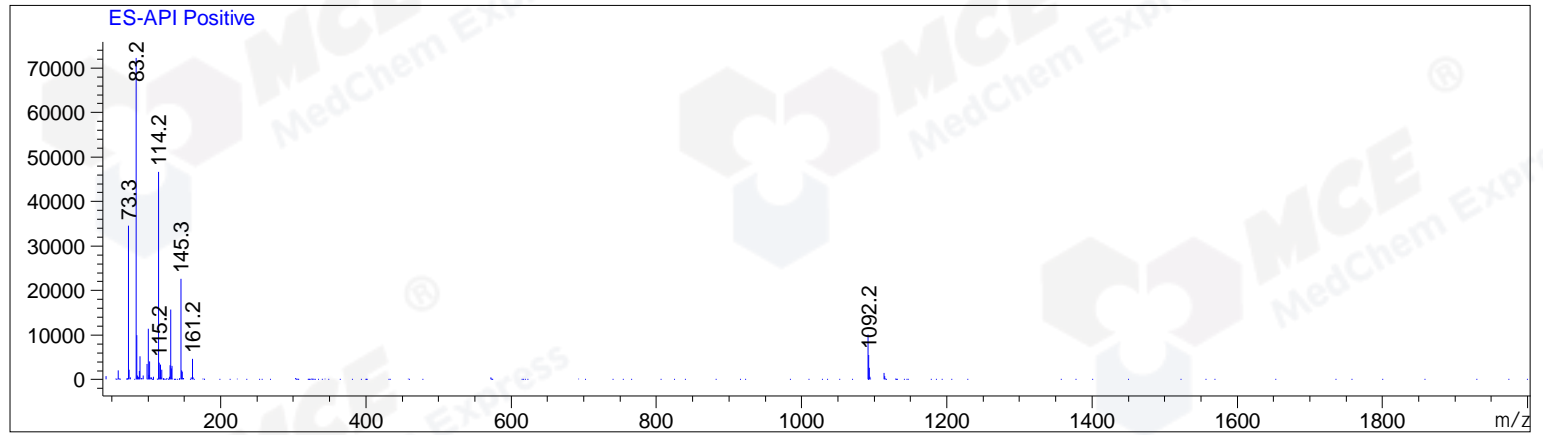
RetTim	Width	Area	Height	Area%	MS (+)
--------	-------	------	--------	-------	--------

Integration Results for MSD1 TIC, MS File

RetTim	Width	Area	Height	Area%	MS (+)
1.88	0.11	433131.72	63353.07	100.00	83

Ret. Time: 1.88

<<<< POSITIVE SPECTRA >>>>



*** End of Report ***