

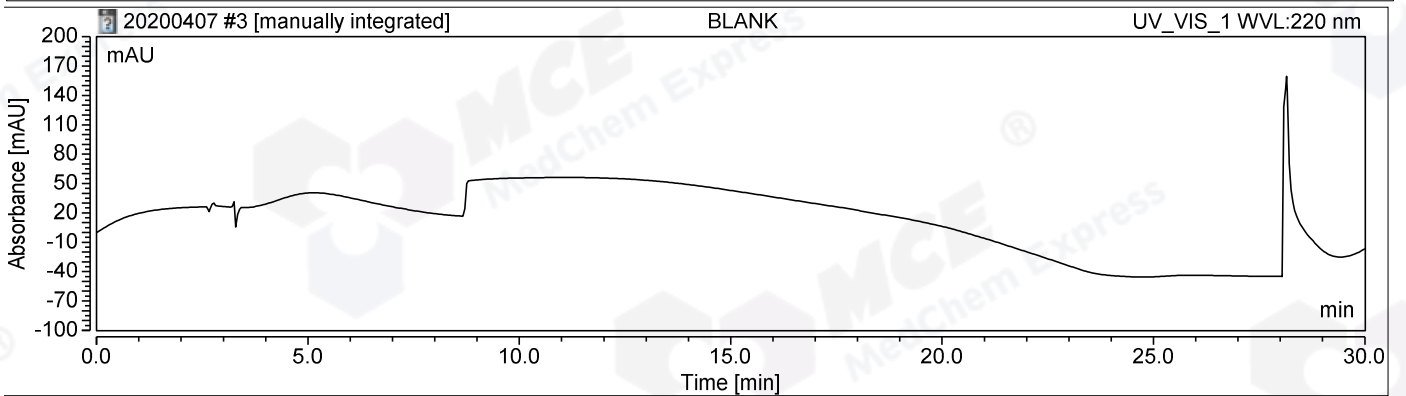
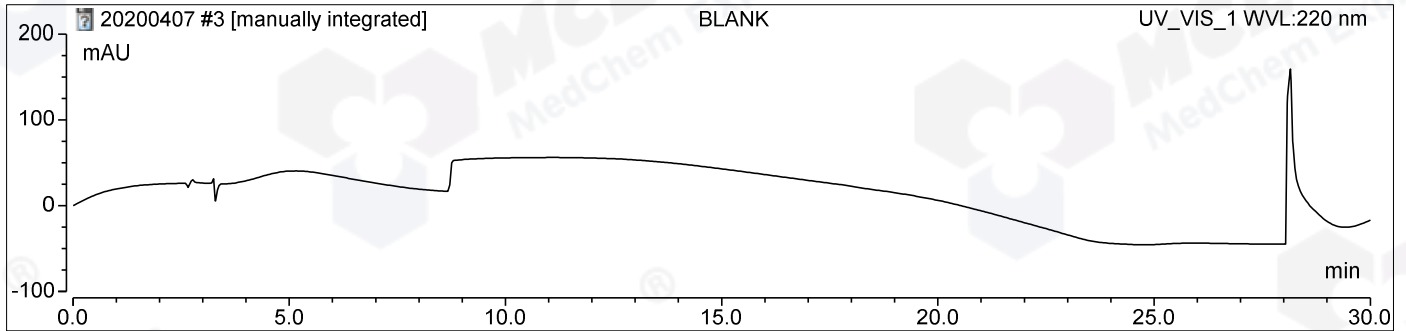
Chromatogram and Results

Injection Details

Injection Name:	BLANK	Run Time (min):	30.00
Vial Number:	RA1	Users:	ly
Injection Type:	Unknown	Injection Volume:	10.00
Calibration Level:		Channel:	UV_VIS_1
Instrument Method:	HM-707_15-H01P03(RP-HPLC)	Wavelength:	220
Processing Method:	3D Quantitative	Bandwidth:	4
Comment:	HM-707_16-BLANK A-RP-341	Dilution Factor:	1.0000
Injection Date/Time:	07/Apr/20 14:35	Sample Weight:	1.0000

chrom://hy442/DATA2/HM-707/HM-707_16/202004/20200407.seq/693.smp/UV_VIS_1.channel/UV_VIS_1.chm

Chromatogram



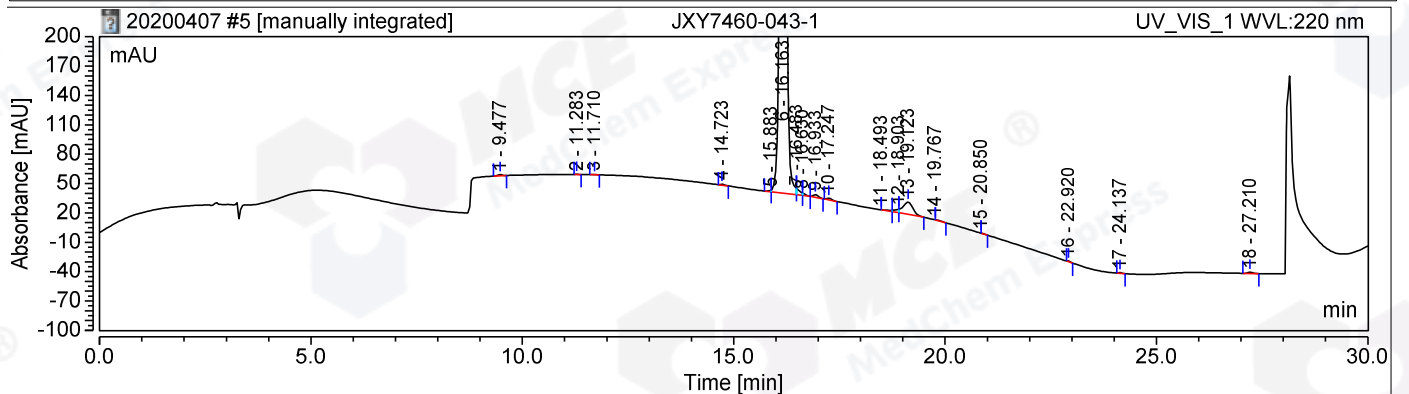
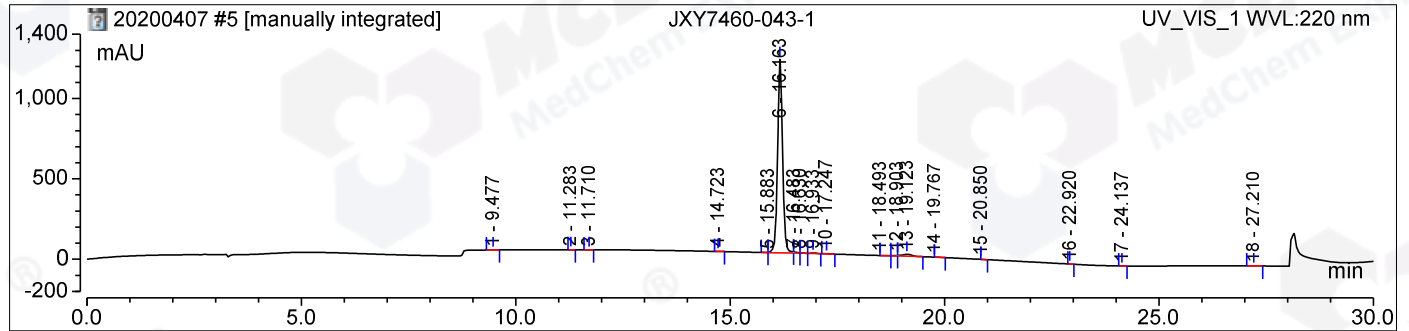
Integration Results

No.	Peak Name	Retention Time min	Area mAU*min	Height mAU	Match	Resolution (EP)	Asymmetry (EP)	Rel.Area %
Total:			0.000	0.000			0.00	0.00

Chromatogram and Results

Injection Details		Run Time (min):	30.00
Injection Name:	JXY7460-043-1	Users:	ly
Vial Number:	RA2	Injection Volume:	5.00
Injection Type:	Unknown	Channel:	UV_VIS_1
Calibration Level:		Wavelength:	220
Instrument Method:	HM-707_15-H01P03(RP-HPLC)	Bandwidth:	4
Processing Method:	3D Quantitative	Dilution Factor:	1.0000
Comment:	HM-707_16-20200407 A-RP-341	Sample Weight:	1.0000
Injection Date/Time:	07/Apr/20 15:35		
chrom://hy442/DATA2/HM-707/HM-707_16/202004/20200407.seq/958.smp/UV_VIS_1.channel/UV_VIS_1.chm			

Chromatogram



Integration Results

No.	Peak Name	Retention Time min	Area mAU*min	Height mAU	Match	Resolution (EP)	Asymmetry (EP)	Rel.Area %
1		9.477	0.137	1.146	983	10.79	0.95	0.08
2		11.283	0.022	0.276	996	2.86	1.25	0.01
3		11.710	0.030	0.303	949	19.08	1.08	0.02
4		14.723	0.107	1.063	959	n.a.	1.34	0.06
5		15.883	0.097	1.458	991	n.a.	n.a.	0.06
6		16.163	160.262	1203.382	1000	n.a.	1.06	96.26
7		16.483	0.629	6.480	999	n.a.	n.a.	0.38
8		16.630	0.179	2.336	994	n.a.	n.a.	0.11
9		16.933	0.390	2.751	997	1.35	1.23	0.23
10		17.247	0.272	1.886	977	n.a.	1.39	0.16
11		18.493	0.149	0.000	0	n.a.	n.a.	0.09
12		18.903	0.378	3.564	996	n.a.	n.a.	0.23
13		19.123	3.440	12.546	994	n.a.	n.a.	2.07
14		19.767	0.057	0.000	0	n.a.	n.a.	0.03
15		20.850	0.025	0.000	1000	n.a.	n.a.	0.02
16		22.920	0.052	0.696	996	10.17	1.58	0.03
17		24.137	0.062	0.795	986	17.66	1.32	0.04
18		27.210	0.193	1.390	999	n.a.	1.18	0.12
Total:			166.482	1240.073			61.91	12.38