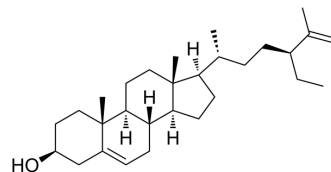


(-)-Clerosterol

Cat. No.:	HY-129159
CAS No.:	2364-23-0
Molecular Formula:	C ₂₉ H ₄₈ O
Molecular Weight:	412.69
Target:	Others
Pathway:	Others
Storage:	Please store the product under the recommended conditions in the Certificate of Analysis.



BIOLOGICAL ACTIVITY

Description

(-)-Clerosterol is a natural product that can be isolated from *Codium fragile*^[1].

REFERENCES

[1]. Kim AD, et al. Cytotoxic effect of clerosterol isolated from *Codium fragile* on A2058 human melanoma cells. *Mar Drugs*. 2013 Feb 6;11(2):418-30.

Caution: Product has not been fully validated for medical applications. For research use only.

Tel: 609-228-6898

Fax: 609-228-5909

E-mail: tech@MedChemExpress.com

Address: 1 Deer Park Dr, Suite Q, Monmouth Junction, NJ 08852, USA