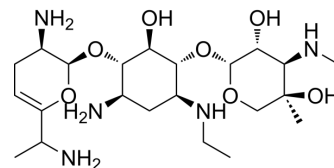


## Vertilmicin sulfate

Cat. No.:	HY-129480
CAS No.:	857468-21-4
Molecular Formula:	C <sub>22</sub> H <sub>43</sub> N <sub>5</sub> O <sub>7</sub>
Molecular Weight:	489.61
Target:	Others
Pathway:	Others
Storage:	Please store the product under the recommended conditions in the Certificate of Analysis.



### BIOLOGICAL ACTIVITY

#### Description

Vertilmicin sulfate combines with FMOC-Cl to form the Vertilmicin-FMOC-Cl adduct, and can be used for the determination of glucosamine sulfate in plasma<sup>[1]</sup>.

### REFERENCES

[1]. Huang TM, et al. High performance liquid chromatography for the determination of glucosamine sulfate in human plasma after derivatization with 9-fluorenylmethyl chloroformate. J Sep Sci. 2006 Oct;29(15):2296-302.

**Caution: Product has not been fully validated for medical applications. For research use only.**

Tel: 609-228-6898

Fax: 609-228-5909

E-mail: tech@MedChemExpress.com

Address: 1 Deer Park Dr, Suite Q, Monmouth Junction, NJ 08852, USA