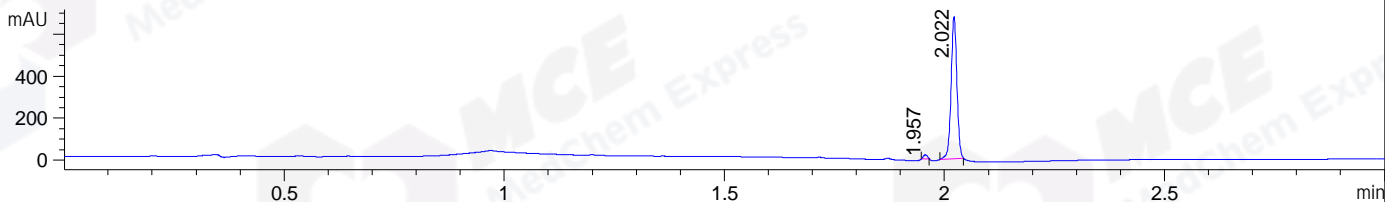
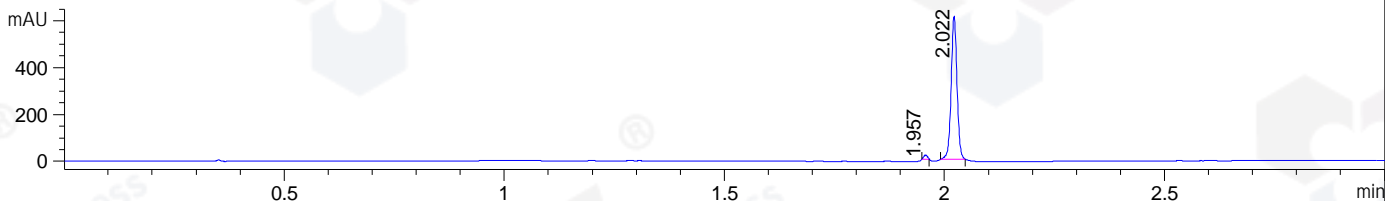


File ..\DATA\2020\20200901\1093\BIZ2020-831-WLQ6.D Tgt Mass (CHM):  
 Injection Date : 1 Sep 20 6:06 pm +0800 Seq. Line : 59  
 Sample Name : BIZ2020-831-WLQ6 Location : P1-C-06  
 Acq. Operator : zyj\_1547 Inj : 1  
 Spec. Reported : MS Integration Inj Volume : 1 ul  
 Acq. Method : D:\Chem32\1\data\2020\20200901\1093\1-POS-3MIN.M  
 Analysis Method : D:\CHEM32\1\DATA\2020\20200901\1093\1-POS-3MIN.M  
 Catalog No : HY-129571  
 Method Info : Mobile Phase: A: water(0.01%TFA) B:ACN(0.01%TFA)  
 Gradient: 5% to 95%B within 1.3 min  
 Flow Rate :1.8ml/min  
 Column :SunFire C18, 4.6\*50mm,3.5um A-RP-607  
 Oven Temperature : 45C

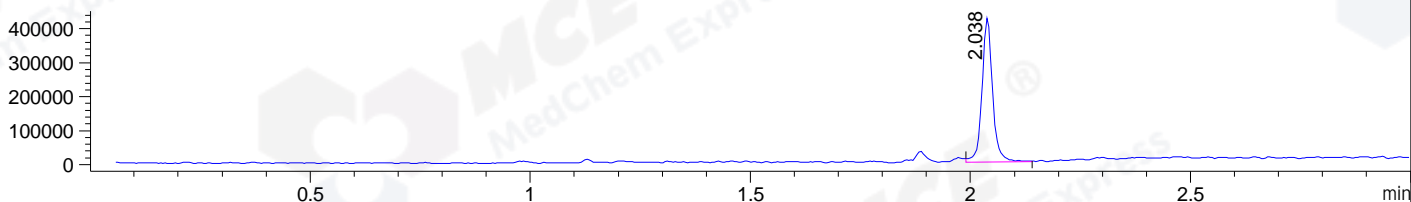
DAD1 B, Sig=214,4 Ref=off



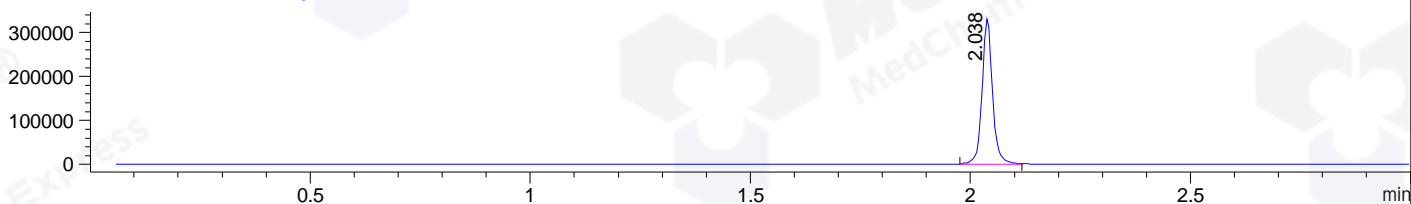
DAD1 C, Sig=254,4 Ref=off



MSD1 TIC, MS File ES-API, Pos, Scan, Frag: 70



Ion 340, MSD1 340, Target Mass 339 +H Positive, EIC=339.7:340.7



## Integration Results for DAD1 B, Sig=214,4 Ref=off

RetTim	Width	Area	Height	Area%	MS (+)
1.96	0.01	12.24	19.46	1.92	326
2.02	0.02	625.14	678.70	98.08	340

## Integration Results for DAD1 C, Sig=254,4 Ref=off

RetTim	Width	Area	Height	Area%	MS (+)
1.96	0.01	10.34	17.25	1.80	326
2.02	0.02	564.94	610.21	98.20	340

## Integration Results for MSD1 TIC, MS File

RetTim	Width	Area	Height	Area%	MS (+)
2.04	0.03	714452.56	425150.66	100.00	340

Ret. Time: 2.04

<<<< POSITIVE SPECTRA >>>>

ES-API Positive

