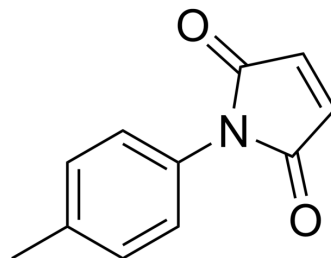


p-Tolylmaleimide

Cat. No.:	HY-129592
CAS No.:	1631-28-3
Molecular Formula:	C ₁₁ H ₉ NO ₂
Molecular Weight:	187.19
Target:	Apoptosis
Pathway:	Apoptosis
Storage:	4°C, protect from light * In solvent : -80°C, 6 months; -20°C, 1 month (protect from light)



BIOLOGICAL ACTIVITY

Description	p-Tolylmaleimide (compound 9) is a naphthalimide derivative that has cytotoxic effects on cancer cells. p-Tolylmaleimide can arrest the cell cycle of human acute myeloid leukemia cells K562 in the sub-G0/G1 phase and induce apoptosis ^[1] .
In Vitro	p-Tolylmaleimide inhibits human acute myeloid leukemia cell K562 with IC ₅₀ s of 24.99 μM (24 h), 6.61 (48 h), and 12.10 (72 h) respectively. p-Tolylmaleimide for inhibits human acute myeloid leukemia cell Jurkat with IC ₅₀ s of 27.16 μM (24 h), 15.51 (48 h), and 3.94 (72 h) respectively ^[1] . MCE has not independently confirmed the accuracy of these methods. They are for reference only.

REFERENCES

[1]. Machado KE, et al. Apoptotic events induced by maleimides on human acute leukemia cell lines. Chem Res Toxicol. 2013 Dec 16;26(12):1904-16.

Caution: Product has not been fully validated for medical applications. For research use only.

Tel: 609-228-6898

Fax: 609-228-5909

E-mail: tech@MedChemExpress.com

Address: 1 Deer Park Dr, Suite Q, Monmouth Junction, NJ 08852, USA