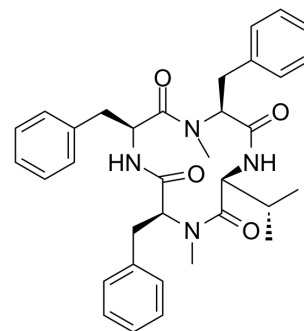


Hirsutide

Cat. No.:	HY-129642
CAS No.:	865368-30-5
Molecular Formula:	C ₃₄ H ₄₀ N ₄ O ₄
Molecular Weight:	568.71
Target:	Others
Pathway:	Others
Storage:	Please store the product under the recommended conditions in the Certificate of Analysis.



BIOLOGICAL ACTIVITY

Description

Hirsutide is a cyclic tetrapeptide that can be found in spider-derived entomopathogenic fungus^[1].

REFERENCES

[1]. Lang G, et, al. Hirsutide, a cyclic tetrapeptide from a spider-derived entomopathogenic fungus, *Hirsutella* sp. *J Nat Prod.* 2005 Aug;68(8):1303-5.

Caution: Product has not been fully validated for medical applications. For research use only.

Tel: 609-228-6898

Fax: 609-228-5909

E-mail: tech@MedChemExpress.com

Address: 1 Deer Park Dr, Suite Q, Monmouth Junction, NJ 08852, USA