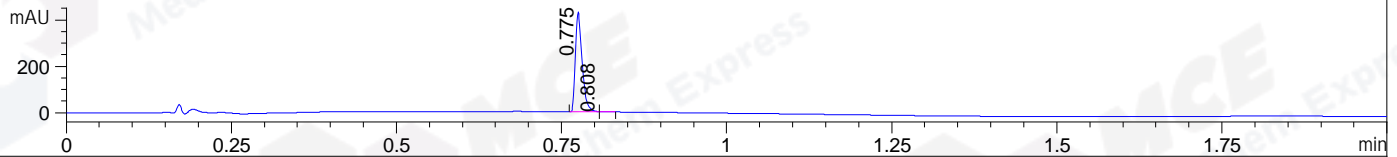
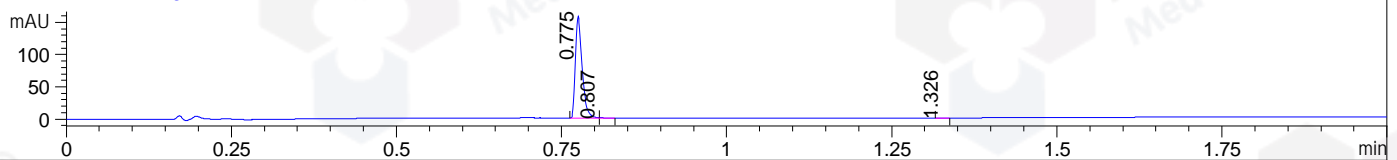


File ..00423 2020-04-23 08-58-29\MXY7444-015-1_2.D Tgt Mass (CHM):
 Injection Date : 23 Apr 20 10:53 am +0800 Seq. Line : 29
 Sample Name : MXY7444-015-1_2 Location : P1-B-11
 Acq. Operator : SYSTEM Inj : 1
 Spec. Reported : MS Integration Inj Volume : 0.2 ul
 Acq. Method : D:\LCMS03\Data\20200423\20200423 2020-04-23 08-58-29\1-POS-UPLC2.0MIN(0.8ML)
 Analysis Method : D:\LCMS03\Data\20200423\20200423 2020-04-23 08-58-29\1-POS-UPLC2.0MIN(0.8ML) .1
 Catalog No : HY-129704A
 Method Info : Mobile Phase: A: water(0.01%TFA) B:ACN(0.01%TFA)
 Gradient: 5% to 95%B within 0.6 min
 Flow Rate :0.8ml/min
 Column :Poroshell 120 EC- C18, 2.1*50mm,1.9um A-RP-530
 Oven Temperature : 45C

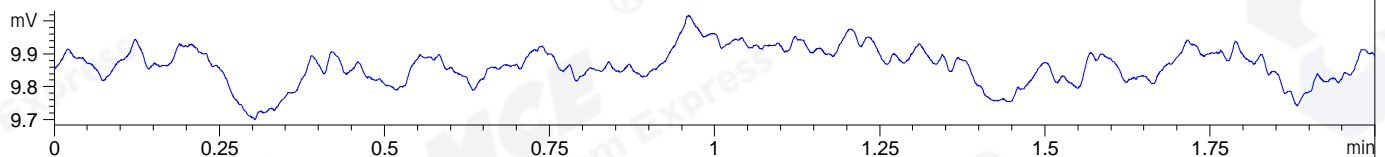
DAD1 A, Sig=214,4 Ref=off



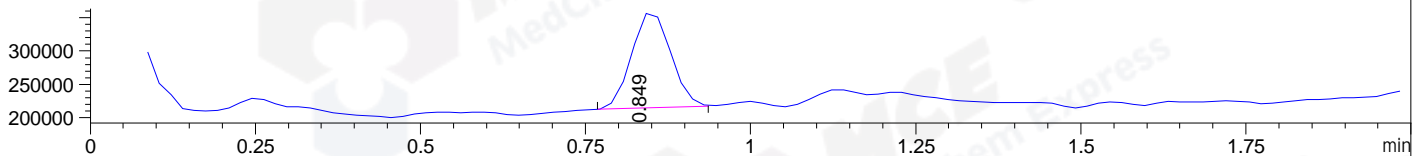
DAD1 B, Sig=254,4 Ref=off



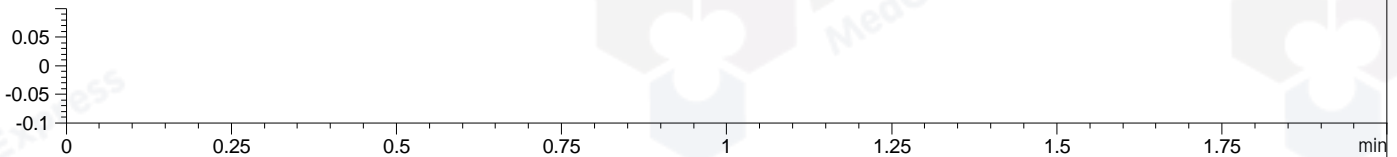
ELS1 A, ELSD Signal



MSD1 TIC, MS File ES-API, Pos, Scan, Frag: 70



Ion 1, MSD1 1, Target Mass 0 +H Positive, EIC=0.7:1.7



Integration Results for DAD1 A, Sig=214,4 Ref=off

RetTim	Width	Area	Height	Area%	MS (+)
0.78	0.01	305.29	431.73	99.86	114
0.81	0.01	0.44	0.97	0.14	114

Integration Results for DAD1 B, Sig=254,4 Ref=off

RetTim	Width	Area	Height	Area%	MS (+)
0.78	0.01	111.15	157.44	99.82	114
0.81	0.01	0.11	0.34	0.10	114
1.33	0.01	0.08	0.13	0.07	114

Integration Results for ELS1 A, ELSD Signal

RetTim	Width	Area	Height	Area%	MS (+)
--------	-------	------	--------	-------	--------

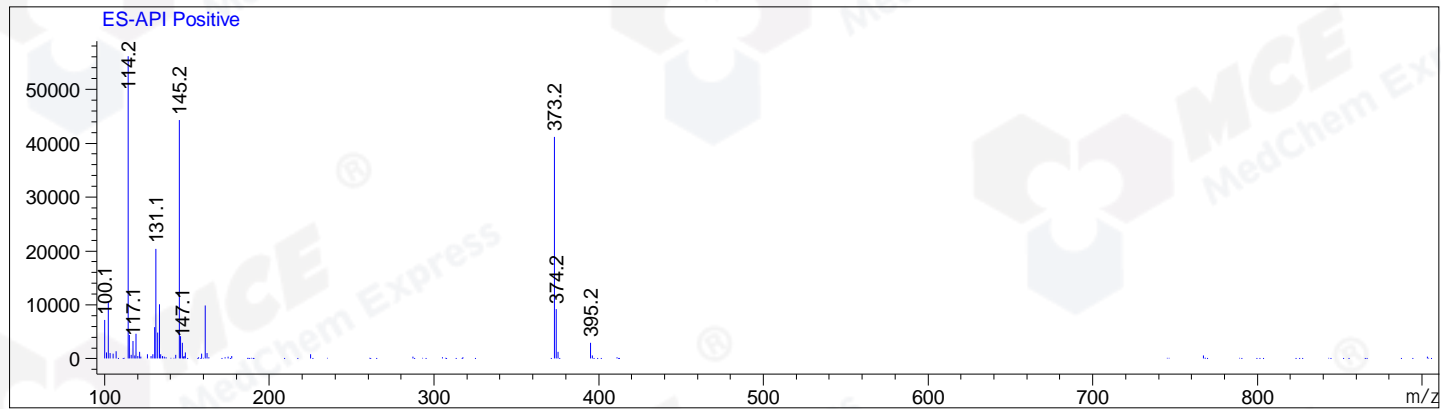
Integration Results for MSD1 TIC, MS File

0.85 0.07 585765.25 146939.73 100.00 114

RetTim	Width	Area	Height	Area%	MS (+)
--------	-------	------	--------	-------	--------

Ret. Time: 0.85

<<<< POSITIVE SPECTRA >>>>



*** End of Report ***