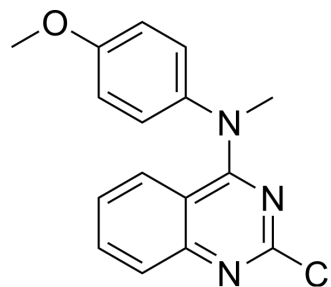


MPI-0441138

Cat. No.:	HY-129715
CAS No.:	827030-33-1
Molecular Formula:	C ₁₆ H ₁₄ ClN ₃ O
Molecular Weight:	299.75
Target:	Apoptosis
Pathway:	Apoptosis
Storage:	Please store the product under the recommended conditions in the Certificate of Analysis.



BIOLOGICAL ACTIVITY

Description	MPI-0441138 is an inducer of apoptosis and an inhibitor of mitosis. MPI-0441138 can induce DNA breaks and induce cytochrome c translocation, leading to tumor cell death ^[1] .								
In Vitro	<p>MPI-0441138 (5 nM; 72 h) induces apoptosis and DNA fragmentation in 22Rv1, MDA-MB-231, Caco-2, and Du145 cells^[1]. MPI-0441138 (5 nM; 1 h) induces AIF and cytochrome c translocation from mitochondria to cytosol and nucleus^[1]. MCE has not independently confirmed the accuracy of these methods. They are for reference only.</p> <p>Apoptosis Analysis^[1]</p> <table border="1"> <tr> <td>Cell Line:</td> <td>22Rv1, MDA-MB-231, Caco-2, and Du145 cells</td> </tr> <tr> <td>Concentration:</td> <td>5 nM</td> </tr> <tr> <td>Incubation Time:</td> <td>12, 24, 48, or 72 h</td> </tr> <tr> <td>Result:</td> <td>Resulted robust caspase-3 activation and poly(ADP-ribose) polymerase cleavage, induced DNA fragmentation.</td> </tr> </table>	Cell Line:	22Rv1, MDA-MB-231, Caco-2, and Du145 cells	Concentration:	5 nM	Incubation Time:	12, 24, 48, or 72 h	Result:	Resulted robust caspase-3 activation and poly(ADP-ribose) polymerase cleavage, induced DNA fragmentation.
Cell Line:	22Rv1, MDA-MB-231, Caco-2, and Du145 cells								
Concentration:	5 nM								
Incubation Time:	12, 24, 48, or 72 h								
Result:	Resulted robust caspase-3 activation and poly(ADP-ribose) polymerase cleavage, induced DNA fragmentation.								

REFERENCES

[1]. Kasibhatla S, et al. MPC-6827: a small-molecule inhibitor of microtubule formation that is not a substrate for multidrug resistance pumps. Cancer Res. 2007 Jun 15;67(12):5865-71.

Caution: Product has not been fully validated for medical applications. For research use only.

Tel: 609-228-6898

Fax: 609-228-5909

E-mail: tech@MedChemExpress.com

Address: 1 Deer Park Dr, Suite Q, Monmouth Junction, NJ 08852, USA