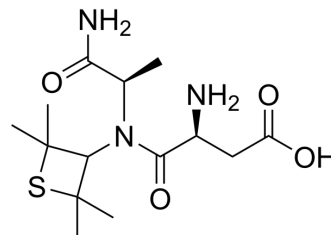


Alitame anhydrous

Cat. No.:	HY-129847		
CAS No.:	80863-62-3		
Molecular Formula:	C ₁₄ H ₂₅ N ₃ O ₄ S		
Molecular Weight:	331.43		
Target:	Others		
Pathway:	Others		
Storage:	Powder	-20°C	3 years
	In solvent	-80°C	6 months
		-20°C	1 month



SOLVENT & SOLUBILITY

In Vitro

DMSO : 125 mg/mL (377.15 mM; Need ultrasonic)

Concentration	Mass		
	1 mg	5 mg	10 mg
1 mM	3.0172 mL	15.0861 mL	30.1723 mL
5 mM	0.6034 mL	3.0172 mL	6.0345 mL
10 mM	0.3017 mL	1.5086 mL	3.0172 mL

Please refer to the solubility information to select the appropriate solvent.

BIOLOGICAL ACTIVITY

Description

Alitame (anhydrous) is a high-intensity sweetener formed from the amino acids L-aspartic acid and D-alanine, and an amine derived from thietane^[1].

REFERENCES

[1]. A. Das, et al. Sweeteners: Classification, Sensory and Health Effects. Encyclopedia of Food and Health, 2016, Pages 234-240.

Caution: Product has not been fully validated for medical applications. For research use only.

Tel: 609-228-6898

Fax: 609-228-5909

E-mail: tech@MedChemExpress.com

Address: 1 Deer Park Dr, Suite Q, Monmouth Junction, NJ 08852, USA