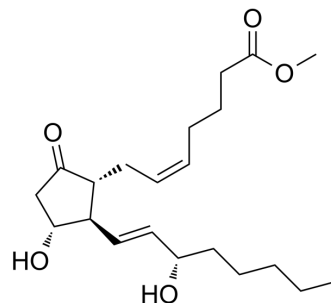


Prostaglandin E2 methyl ester

Cat. No.:	HY-129920
CAS No.:	31753-17-0
Molecular Formula:	C ₂₁ H ₃₄ O ₅
Molecular Weight:	366.49
Target:	Others
Pathway:	Others
Storage:	Please store the product under the recommended conditions in the Certificate of Analysis.



BIOLOGICAL ACTIVITY

Description

Prostaglandin E2 methyl ester (PGE2 methyl ester) is a lipophilic derivative analog of PGE2 (HY-101952). Prostaglandin E2 methyl ester has more central penetration ability than PGE2^[1].

REFERENCES

[1]. Strand JC, et al. Biological activity of the methyl esters of prostaglandin E2 and its (15S)-15-methyl analogue. Eur J Pharmacol. 1974 May;26(2):151-7.

Caution: Product has not been fully validated for medical applications. For research use only.

Tel: 609-228-6898

Fax: 609-228-5909

E-mail: tech@MedChemExpress.com

Address: 1 Deer Park Dr, Suite Q, Monmouth Junction, NJ 08852, USA