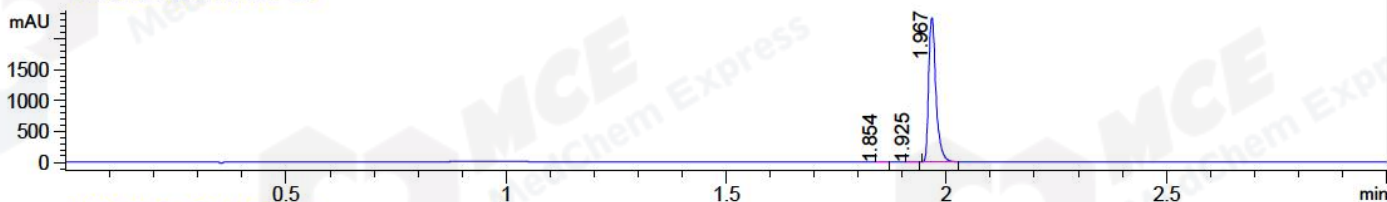


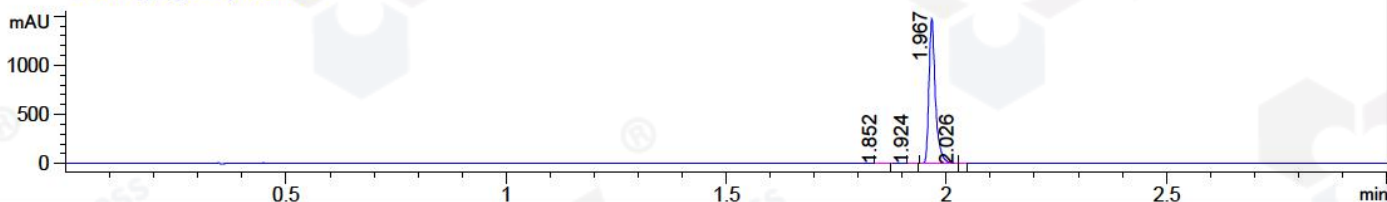
File ..\DATA\2018\20180625\275\CPK2018-621-18055.D Tgt Mass (CHM):

Injection Date : 25 Jun 18 1:47 pm +0800 Seq. Line : 14
 Sample Name : CPK2018-621-18055 Location : P1-C-04
 Acq. Operator : LQ_1052 Inj : 1
 Spec. Reported : MS Integration Inj Volume : 1 ul
 Acq. Method : D:\Chem32\1\data\2018\20180625\275\1-POS-3MIN-1.M
 Analysis Method : D:\CHEM32\1\DATA\2018\20180625\275\1-POS-3MIN-1.M
 Catalog No : HY-12993 Batch#18055 A-RP-314
 Method Info : Mobile Phase: A: water(0.01%TFA) B:ACN(0.01%TFA)
 Gradient: 5% to 95%B within 1.3 min
 Flow Rate :1.8ml/min
 Column :SunFire C18, 4.6*50mm,3.5um A-RP-314
 Oven Temperature : 45□

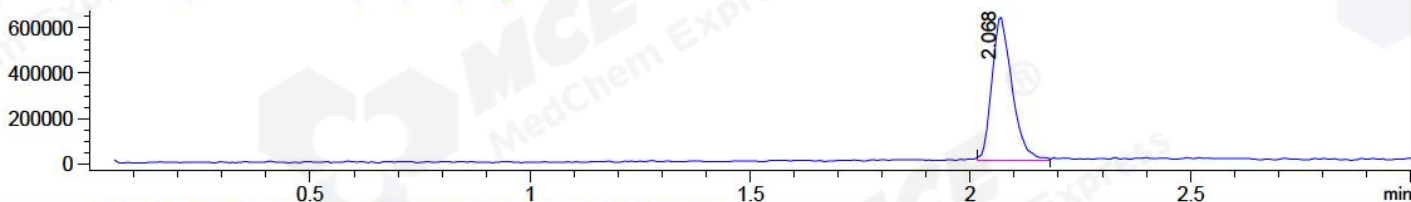
DAD1 B, Sig=214,4 Ref=off



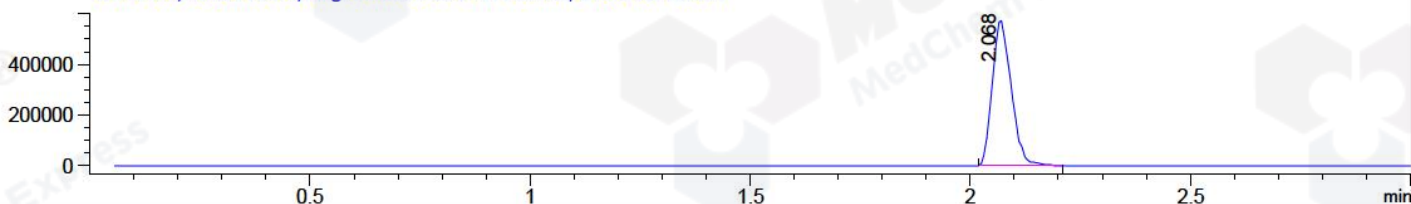
DAD1 C, Sig=254,4 Ref=off



MSD1 TIC, MS File ES-API, Pos, Scan, Frag: 70



Ion 389.4, MSD1 389.4, Target Mass 388.4 +H Positive, EIC=389.1:390.1



Integration Results for DAD1 B, Sig=214,4 Ref=off

RetTim	Width	Area	Height	Area%	MS (+)
1.85	0.02	1.10	1.01	0.04	141
1.93	0.01	2.14	2.61	0.08	141
1.97	0.02	2692.34	2332.08	99.88	389

Integration Results for DAD1 C, Sig=254,4 Ref=off

RetTim	Width	Area	Height	Area%	MS (+)
1.85	0.02	1.15	1.11	0.08	141
1.92	0.01	1.15	1.38	0.08	141
1.97	0.02	1500.02	1473.86	99.75	141
2.03	0.01	1.52	1.91	0.10	389

Integration Results for MSD1 TIC, MS File

RetTim	Width	Area	Height	Area%	MS (+)
2.07	0.05	1997632.88	633951.31	100.00	389

Ret. Time: 2.07

<<<< POSITIVE SPECTRA >>>>

