

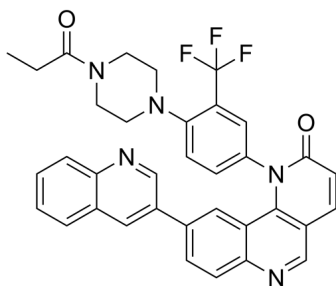
Torin 1

Cat. No.: HY-13003
Batch No.: 20730
CAS No.: 1222998-36-8
Molecular Formula: C₃₅H₂₈F₃N₅O₂

ANALYTICAL DATA

Theoretical: C(69.18%), H(4.64%), N(11.53%)
Result: C(69.495%), H(4.50%), N(11.60%)

Chemical Structure:



Caution: Product has not been fully validated for medical applications. For research use only.

Tel: 609-228-6898

Fax: 609-228-5909

E-mail: tech@MedChemExpress.com

Address: 1 Deer Park Dr, Suite Q, Monmouth Junction, NJ 08852, USA