

File ..\DATA\2019\20190603\587\CPK2019-603-06452.D Tgt Mass (CHM):

Injection Date : 3 Jun 19 2:34 pm +0800 Seq. Line : 23

Sample Name : CPK2019-603-06452 Location : P1-B-09

Acq. Operator : ZJ_1432 Inj : 1

Spec. Reported : MS Integration Inj Volume : 1 ul

Acq. Method : D:\Chem32\1\data\2019\20190603\587\1-POS-3MIN.M

Analysis Method : D:\CHEM32\1\DATA\2019\20190603\587\1-POS-3MIN.M

Catalog No : HY-13007 Batch#06452

Method Info : Mobile Phase: A: water(0.01%TFA) B:ACN(0.01%TFA)

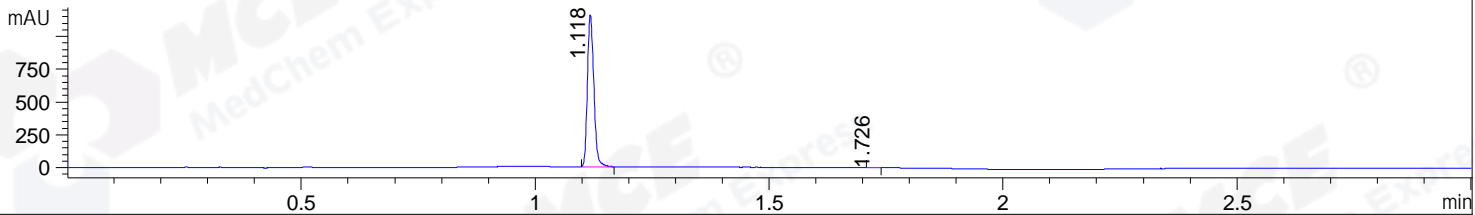
Gradient: 5% to 95%B within 1.3 min

Flow Rate :1.8ml/min

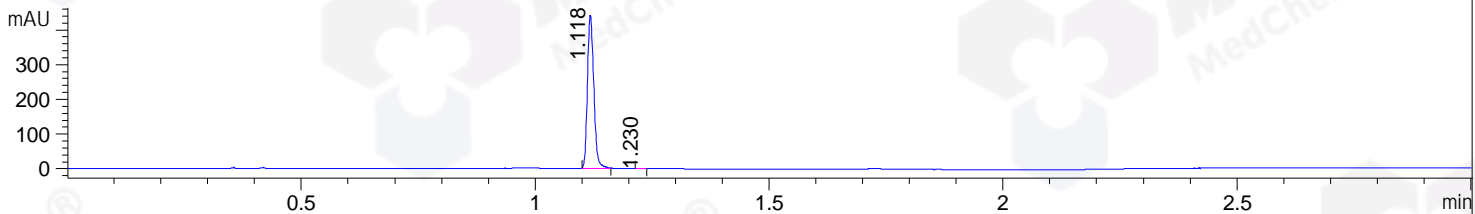
Column :SunFire C18, 4.6*50mm,3.5um A-RP-433

Oven Temperature : 45

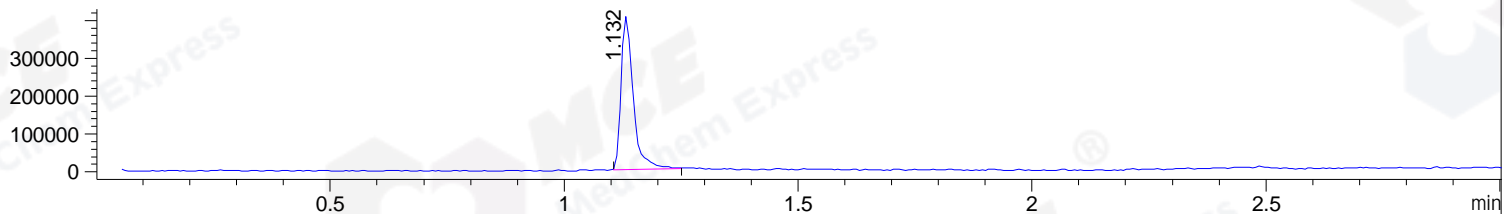
DAD1 B, Sig=214,4 Ref=off



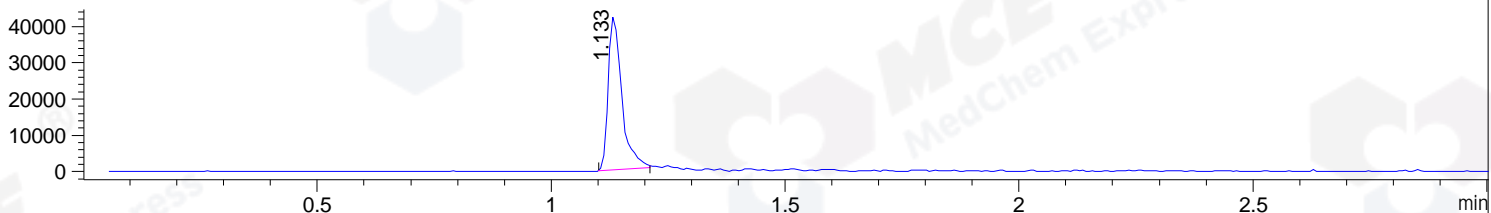
DAD1 C, Sig=254,4 Ref=off



MSD1 TIC, MS File ES-API, Pos, Scan, Frag: 70



Ion 491.6349, MSD1 491.6349, Target Mass 490.6349 +H Positive, EIC=491.33:492.33



Integration Results for DAD1 B, Sig=214,4 Ref=off

RetTim	Width	Area	Height	Area%	MS (+)
1.12	0.01	1111.18	1158.84	99.84	246
1.73	0.02	1.79	1.52	0.16	491

Integration Results for DAD1 C, Sig=254,4 Ref=off

RetTim	Width	Area	Height	Area%	MS (+)
1.12	0.01	419.50	441.75	99.95	246
1.23	0.01	0.22	0.26	0.05	491

Integration Results for MSD1 TIC, MS File

RetTim	Width	Area	Height	Area%	MS (+)
1.13	0.03	730493.50	404089.03	100.00	246

Ret. Time: 1.13

<<<< POSITIVE SPECTRA >>>>

ES-API Positive

