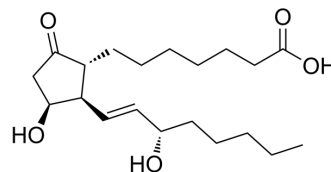


11-epi-PGE1

Cat. No.:	HY-130226
CAS No.:	24570-01-2
Molecular Formula:	C ₂₀ H ₃₄ O ₅
Molecular Weight:	354.48
Target:	Endogenous Metabolite; Prostaglandin Receptor
Pathway:	Metabolic Enzyme/Protease; GPCR/G Protein
Storage:	Please store the product under the recommended conditions in the Certificate of Analysis.



BIOLOGICAL ACTIVITY

Description

11-epi-PGE1 (11β-Prostaglandin E1) is a less potent isomer of Prostaglandin E1 (HY-B0131). Prostaglandin E1 is a prostanoid receptor ligand^[1].

REFERENCES

[1]. Zoutendam PH, et al. Quantitative determination of alprostadiol (PGE) in bulk drug and pharmaceutical formulations by high-performance liquid chromatography. J Chromatogr. 1984 Jan 20;283:273-80.

Caution: Product has not been fully validated for medical applications. For research use only.

Tel: 609-228-6898

Fax: 609-228-5909

E-mail: tech@MedChemExpress.com

Address: 1 Deer Park Dr, Suite Q, Monmouth Junction, NJ 08852, USA