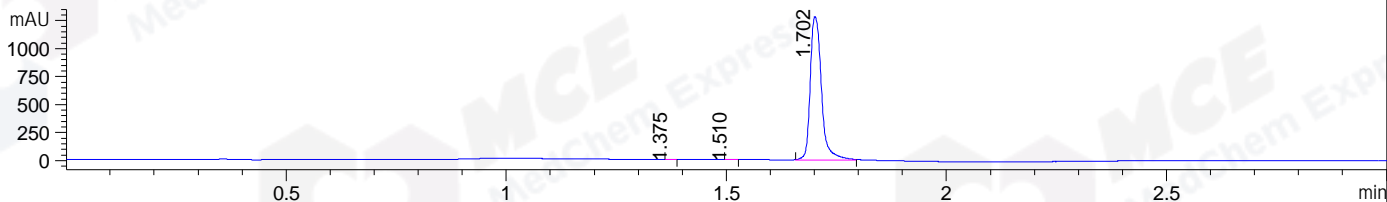
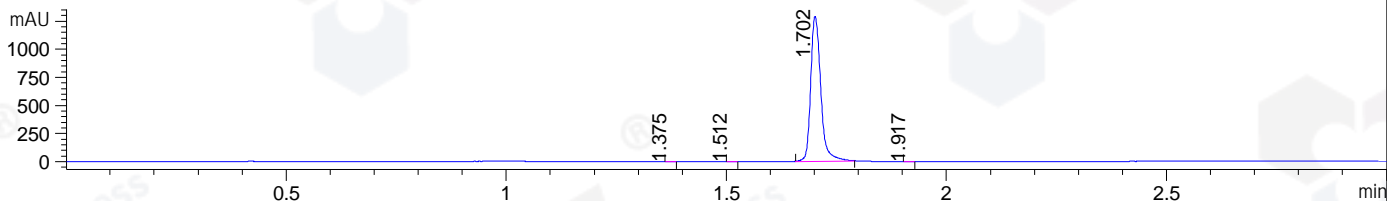


File ..1\DATA\2019\20190327\567\BIZ2019-326-WYQ2.D Tgt Mass (CHM):  
 Injection Date : 27 Mar 19 11:19 am +0800 Seq. Line : 22  
 Sample Name : BIZ2019-326-WYQ2 Location : P1-C-03  
 Acq. Operator : LQ\_1052 Inj : 1  
 Spec. Reported : MS Integration Inj Volume : 1 ul  
 Acq. Method : D:\Chem32\1\data\2019\20190327\567\1-POS-3MIN-1.M  
 Analysis Method : D:\CHEM32\1\DATA\2019\20190327\567\1-POS-3MIN-1.M  
 Catalog No : HY-13024 Batch#39644  
 Method Info : Mobile Phase: A: water(0.01%TFA) B:ACN(0.01%TFA)  
 Gradient: 5% to 95%B within 1.3 min  
 Flow Rate :1.8ml/min  
 Column :SunFire C18, 4.6\*50mm,3.5um A-RP-314  
 Oven Temperature : 45

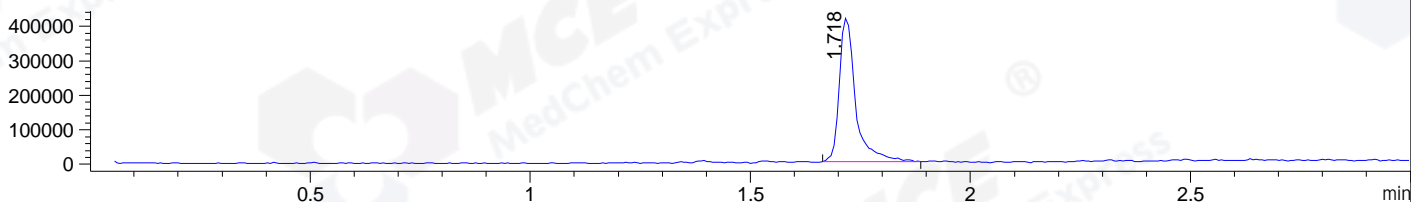
DAD1 B, Sig=214,4 Ref=off



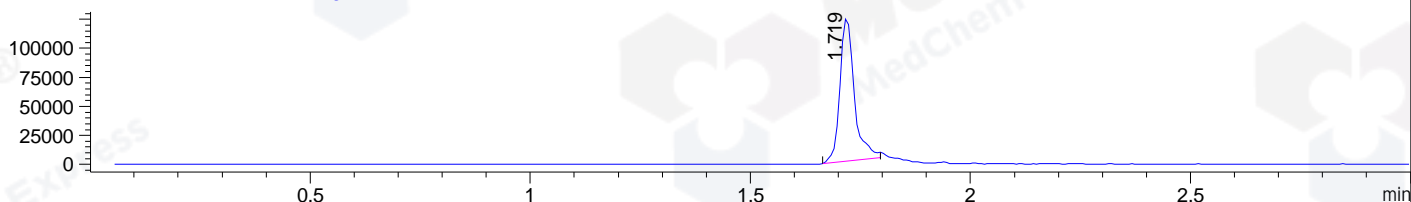
DAD1 C, Sig=254,4 Ref=off



MSD1 TIC, MS File ES-API, Pos, Scan, Frag: 70



Ion 554.2, MSD1 554.2, Target Mass 553.2 +H Positive, EIC=553.9:554.9



## Integration Results for DAD1 B, Sig=214,4 Ref=off

RetTim	Width	Area	Height	Area%	MS (+)
1.38	0.02	0.83	0.78	0.04	267
1.51	0.02	1.27	1.13	0.06	160
1.70	0.03	2271.08	1280.13	99.91	278

## Integration Results for DAD1 C, Sig=254,4 Ref=off

RetTim	Width	Area	Height	Area%	MS (+)
1.37	0.02	0.43	0.43	0.02	267
1.51	0.02	0.35	0.34	0.02	160
1.70	0.03	2071.14	1291.73	99.95	278
1.92	0.02	0.25	0.24	0.01	554

## Integration Results for MSD1 TIC, MS File

RetTim	Width	Area	Height	Area%	MS (+)
1.72	0.04	1076302.50	417156.06	100.00	278

Ret. Time: 1.72

<<<< POSITIVE SPECTRA >>>>

ES-API Positive

