

File ..01228 2020-12-28 09-03-35\CM8761-017-1A_1.D Tgt Mass (CHM):

Injection Date : 28 Dec 20 10:29 am +0800 Seq. Line : 21

Sample Name : CM8761-017-1A Location : P1-E-10

Acq. Operator : SYSTEM Inj : 1

Spec. Reported : MS Integration Inj Volume : 0.2 ul

Acq. Method : D:\LCMS03\Data\20201228\20201228 2020-12-28 09-03-35\1-POS-UPLC2.0MIN(0.8ML)

Analysis Method : D:\LCMS03\Data\20201228\20201228 2020-12-28 09-03-35\1-POS-UPLC2.0MIN(0.8ML) -

CAS NO. : 2509359-75-3

Method Info : Mobile Phase: A: water(0.01%TFA) B:ACN(0.01%TFA)

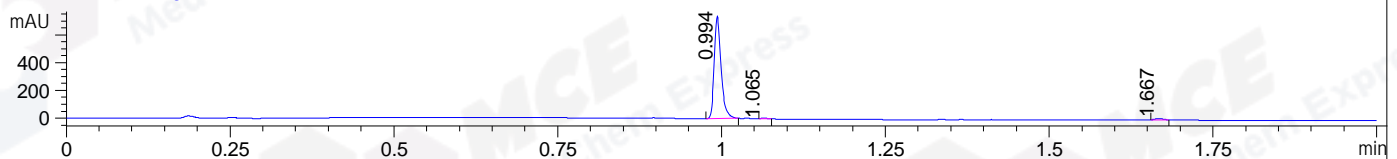
Gradient: 5% to 95%B within 0.6 min

Flow Rate : 0.8ml/min

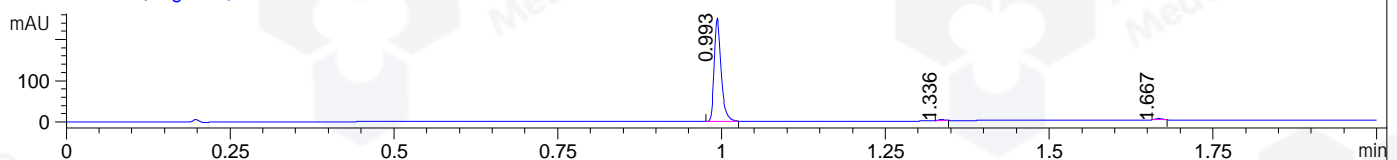
Column : Poroshell 120 EC- C18, 2.1*50mm,1.9um A-RP-677

Oven Temperature : 45C

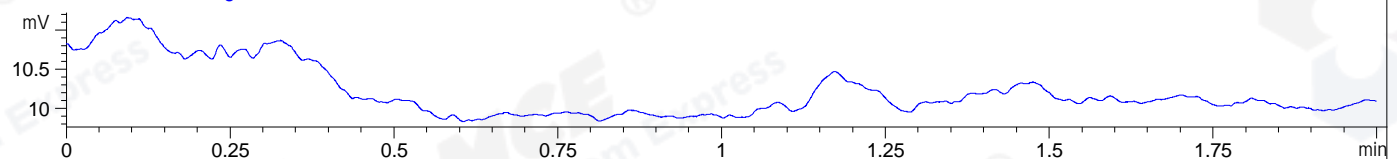
DAD1 A, Sig=214,4 Ref=off



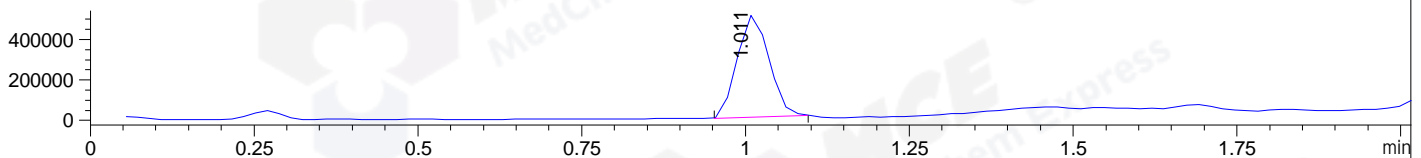
DAD1 B, Sig=254,4 Ref=off



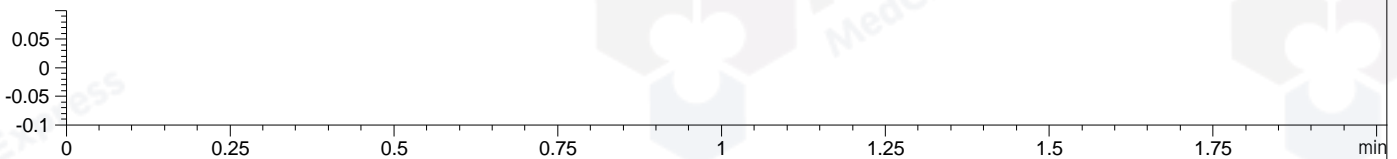
ELS1 A, ELSD Signal



MSD1 TIC, MS File ES-API, Pos, Scan, Frag: 70



Ion 1, MSD1 1, Target Mass 0 +H Positive, EIC=0.7:1.7



Integration Results for DAD1 A, Sig=214,4 Ref=off

RetTim	Width	Area	Height	Area%	MS (+)
0.99	0.01	544.78	742.46	98.06	539
1.07	0.01	2.52	3.61	0.45	1098
1.67	0.01	8.23	9.74	1.48	1331

Integration Results for DAD1 B, Sig=254,4 Ref=off

RetTim	Width	Area	Height	Area%	MS (+)
0.99	0.01	183.43	251.16	98.06	539
1.34	0.01	1.47	2.32	0.79	373
1.67	0.01	2.16	2.91	1.15	1331

Integration Results for ELS1 A, ELSD Signal

RetTim	Width	Area	Height	Area%	MS (+)
--------	-------	------	--------	-------	--------

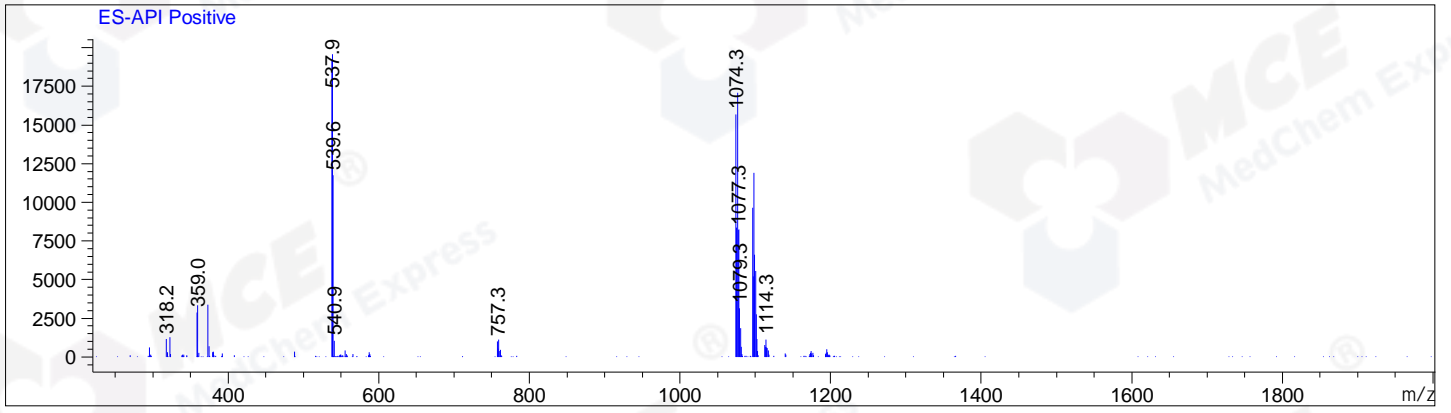
Integration Results for MSD1 TIC, MS File



RetTim	Width	Area	Height	Area%	MS (+)
--------	-------	------	--------	-------	--------

Ret. Time: 1.01

<<<< POSITIVE SPECTRA >>>>



*** End of Report ***