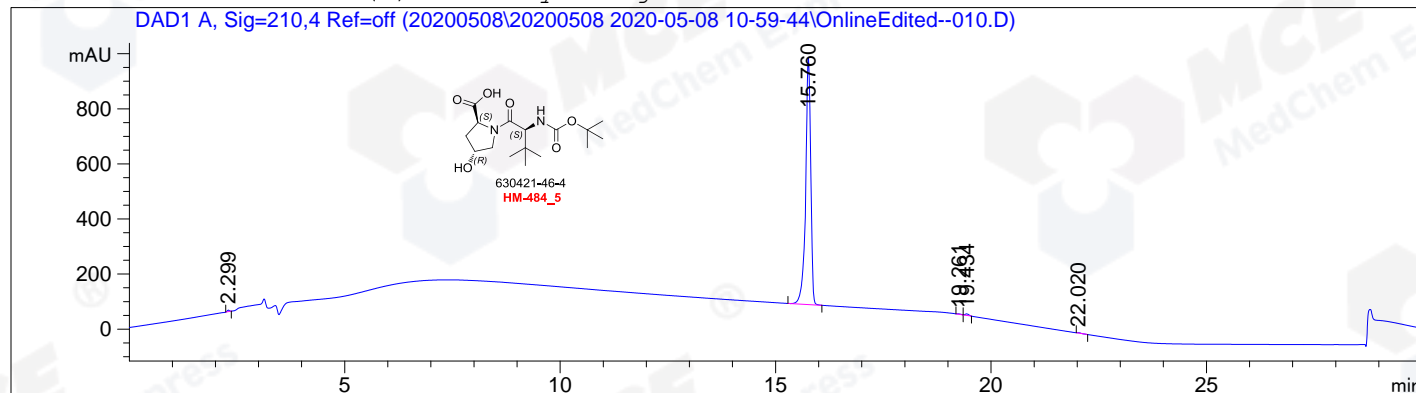


=====  
Acq. Operator : sy\_1779 Seq. Line : 10  
Acq. Instrument : HPLC-12 Location : 25  
Injection Date : 5/8/2020 14:13:13 Inj : 1  
Inj Volume : 10.000 µl  
Different Inj Volume from Sample Entry! Actual Inj Volume : 5.000 µl  
Acq. Method : D:\Chem32\1\Data\20200508\20200508 2020-05-08 10-59-44\HM-484\_5-H01P01 (RP-HPLC).M  
Last changed : 5/8/2020 11:09:35 by sy\_1779  
Analysis Method : D:\Chem32\1\Data\20200508\20200508 2020-05-08 10-59-44\HM-484\_5-H01P01 (RP-HPLC).M (Sequence Method)  
Last changed : 5/8/2020 14:49:42 by zqq\_793  
(modified after loading)  
CAS NO. : 2509359-75-3 A-RP-497

Additional Info : Peak(s) manually integrated



=====  
Area Percent Report  
=====

Sorted By : Signal  
Multiplier : 1.0000  
Dilution : 1.0000  
Do not use Multiplier & Dilution Factor with ISTDs

Signal 1: DAD1 A, Sig=210,4 Ref=off

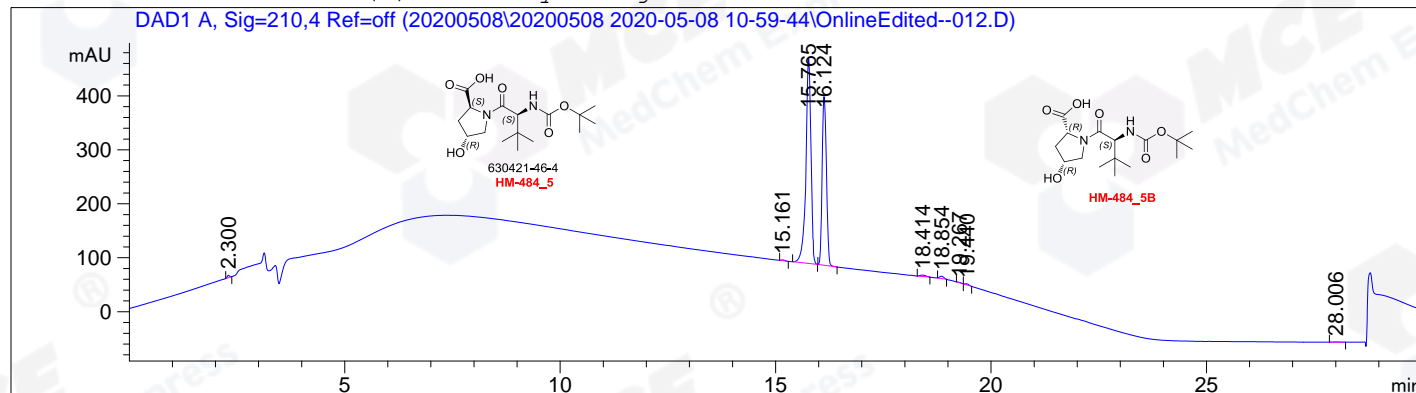
Peak #	RetTime [min]	Type	Width [min]	Area [mAU*s]	Height [mAU]	Area %
1	2.299	MM	0.0586	20.47843	5.82141	0.2766
2	15.760	MM	0.1361	7329.89111	897.38373	99.0186
3	19.261	MF	0.1016	9.55533	1.56731	0.1291
4	19.434	FM	0.0994	34.00795	5.70389	0.4594
5	22.020	BB	0.0991	8.60797	1.37388	0.1163

Totals : 7402.54080 911.85022

=====  
\*\*\* End of Report \*\*\*

=====  
Acq. Operator : sy\_1779 Seq. Line : 12  
Acq. Instrument : HPLC-12 Location : 27  
Injection Date : 5/8/2020 15:15:02 Inj : 1  
Inj Volume : 10.000 µl  
Different Inj Volume from Sample Entry! Actual Inj Volume : 5.000 µl  
Acq. Method : D:\Chem32\1\Data\20200508\20200508 2020-05-08 10-59-44\HM-484\_5-H01P01 (RP-HPLC).M  
Last changed : 5/8/2020 11:09:35 by sy\_1779  
Analysis Method : D:\Chem32\1\Data\20200508\20200508 2020-05-08 10-59-44\HM-484\_5-H01P01 (RP-HPLC).M (Sequence Method)  
Last changed : 5/8/2020 15:53:35 by zqq\_793  
(modified after loading)  
CAS NO. : 2509359-75-3 A-RP-497

Additional Info : Peak(s) manually integrated



=====  
Area Percent Report  
=====

Sorted By : Signal  
Multiplier : 1.0000  
Dilution : 1.0000  
Do not use Multiplier & Dilution Factor with ISTDs

Signal 1: DAD1 A, Sig=210,4 Ref=off

Peak #	RetTime [min]	Type	Width [min]	Area [mAU*s]	Height [mAU]	Area %
1	2.300	MM	0.0598	16.32981	4.54800	0.3059
2	15.161	BB	0.0998	8.29182	1.34799	0.1553
3	15.765	BB	0.1247	3098.58789	381.80737	58.0486
4	16.124	MM	0.1140	2141.47119	313.05707	40.1181
5	18.414	MM	0.1474	22.61931	2.55742	0.4237
6	18.854	MM	0.1114	29.59955	4.42676	0.5545
7	19.267	MF	0.0984	3.98383	6.74433e-1	0.0746
8	19.440	FM	0.1016	13.03015	2.13768	0.2441
9	28.006	BB	0.1364	4.00438	4.84601e-1	0.0750

Totals : 5337.91793 711.04133

=====  
\*\*\* End of Report \*\*\*