

File ..200408 2020-04-08 08-37-58\JY7705-011-3\_1.D Tgt Mass (CHM):

Injection Date : 8 Apr 20 12:54 pm +0800 Seq. Line : 65

Sample Name : JY7705-011-3 Location : P1-E-06

Acq. Operator : SYSTEM Inj : 1

Spec. Reported : MS Integration Inj Volume : 0.6 ul

Acq. Method : D:\LCMS03\Data\20200408\20200408 2020-04-08 08-37-58\1-POS-UPLC2.0MIN(0.8ML)

Analysis Method : D:\LCMS03\Data\20200408\20200408 2020-04-08 08-37-58\1-POS-UPLC2.0MIN(0.8ML)

Catalog No : HY-130296

Method Info : Mobile Phase: A: water(0.01%TFA) B:ACN(0.01%TFA)

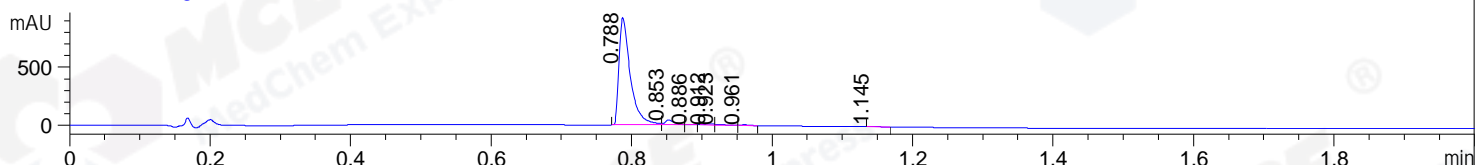
Gradient: 5% to 95%B within 0.6 min

Flow Rate :0.8ml/min

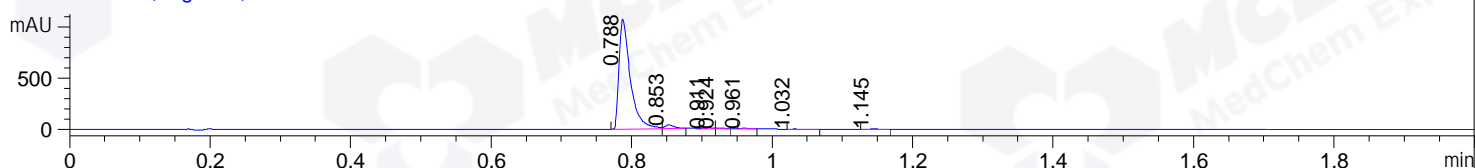
Column :Poroshell 120 EC- C18, 2.1\*50mm,1.9um A-RP-530

Oven Temperature : 45C

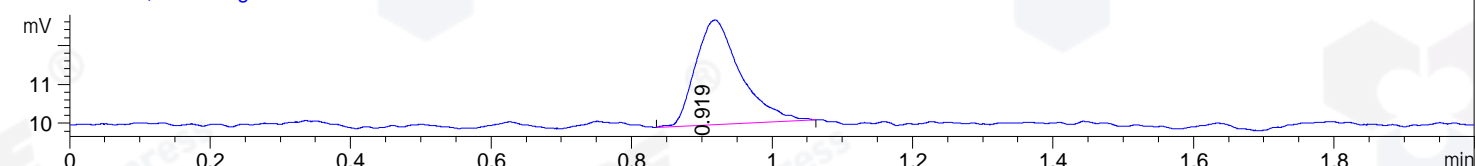
DAD1 A, Sig=214,4 Ref=off



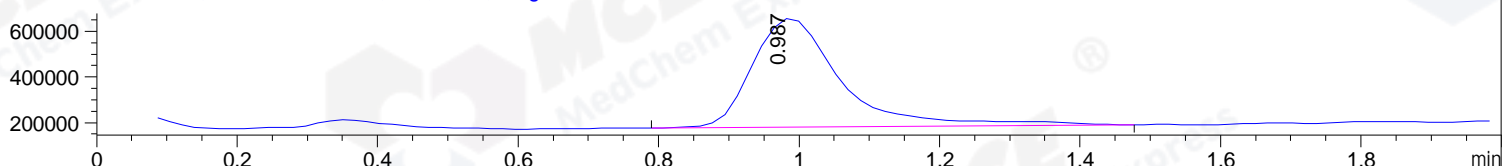
DAD1 B, Sig=254,4 Ref=off



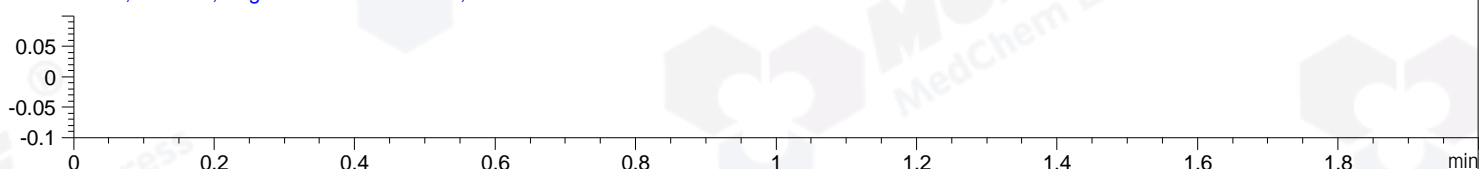
ELS1 A, ELSD Signal



MSD1 TIC, MS File ES-API, Pos, Scan, Frag: 70



Ion 1, MSD1 1, Target Mass 0 +H Positive, EIC=0.7:1.7



Integration Results for DAD1 A, Sig=214,4 Ref=off

RetTim	Width	Area	Height	Area%	MS (+)
0.79	0.02	1027.95	921.54	95.05	114
0.85	0.01	33.30	41.54	3.08	114
0.89	0.01	1.37	1.83	0.13	114
0.91	0.01	7.24	8.90	0.67	114
0.92	0.01	4.82	5.88	0.45	486
0.96	0.01	3.77	5.85	0.35	486
1.14	0.01	3.09	4.40	0.29	114

Integration Results for DAD1 B, Sig=254,4 Ref=off

RetTim	Width	Area	Height	Area%	MS (+)
0.79	0.02	1201.15	1073.97	95.90	114
0.85	0.01	33.15	39.10	2.65	114
0.91	0.01	7.00	7.86	0.56	114
0.92	0.01	4.01	5.80	0.32	486
0.96	0.01	3.74	5.93	0.30	486
1.03	0.01	0.67	0.77	0.05	486
1.14	0.01	2.75	3.69	0.22	114

## Integration Results for ELS1 A, ELSD Signal

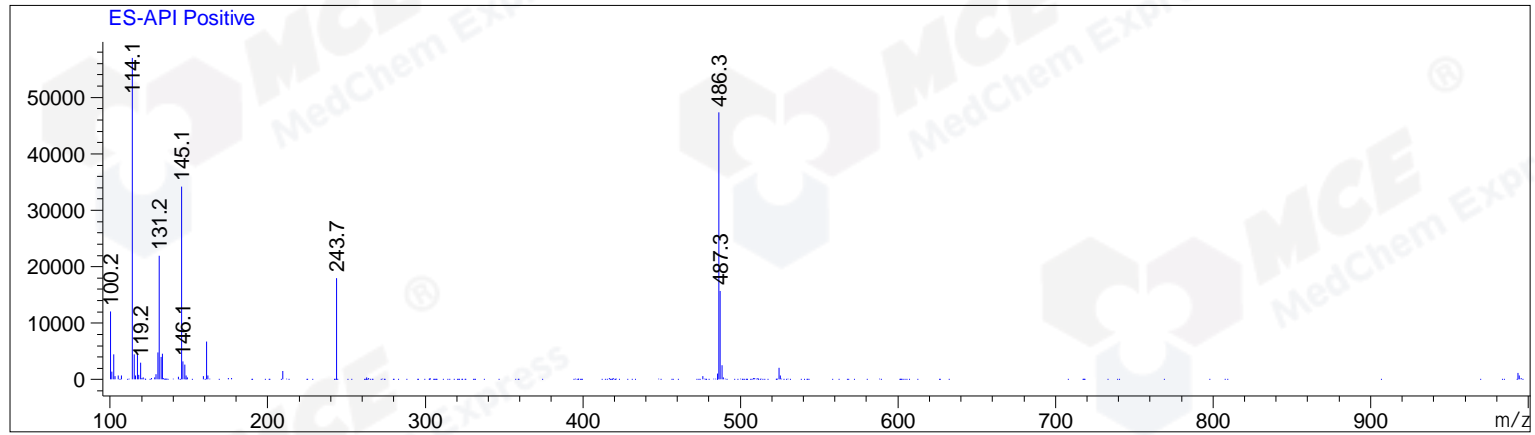
RetTim	Width	Area	Height	Area%	MS (+)
0.92	0.07	12.02	2.69	100.00	486

## Integration Results for MSD1 TIC, MS File

RetTim	Width	Area	Height	Area%	MS (+)
0.99	0.13	4202517.00	478118.31	100.00	114

Ret. Time: 0.99

<<<< POSITIVE SPECTRA >>>>



\*\*\* End of Report \*\*\*