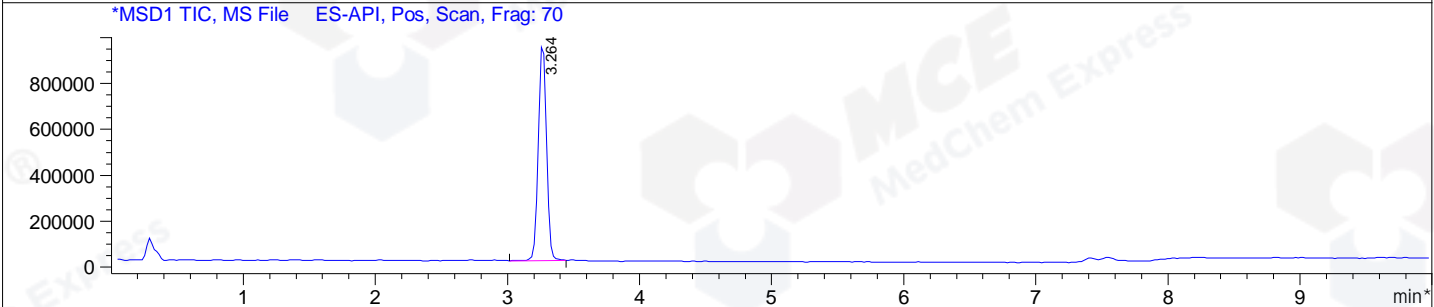
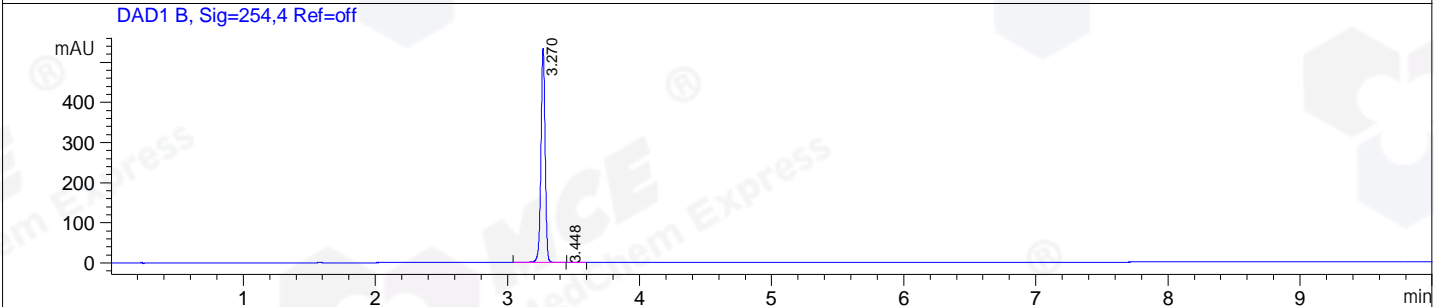
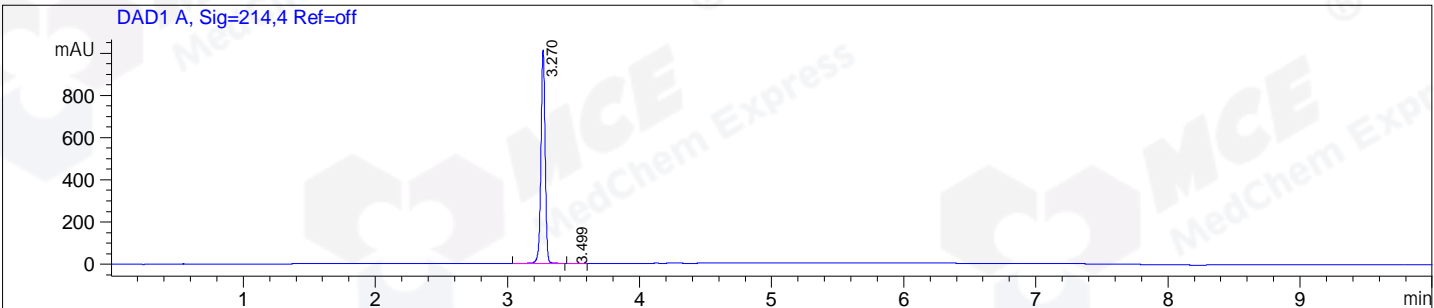


File E:\ChemStation\1\DATA\2024\2024-07\2024-07-18\CPK2024-718-42990-UPLC-MS-10-039447.D
 Injection Date : 18-Jul-24, 17:32:55 Tgt Mass(EZX) :
 Sample Name : CPK2024-718-42990 Location : P2-C-09
 Acq. Operator : LY_2278 Inj : 1
 Spec. Reported : MS Integration Inj Volume : 0.8 ul
 Acq. Method : E:\ChemStation\1\Methods\1-POS-UPLC10.0MIN(1.2)(150-2000).M
 Analysis Method : E:\CHEMSTATION\1\METHODS\1-POS-UPLC10.0MIN(1.2)(150-2000).M
 CAS NO. : 1260907-17-2 WalkUp method: '1-POS-UPLC10.0MIN(1.2)(150-2000)' Project: CPK202
 Method Info : Mobile Phase: A: water(0.01%TFA) B:ACN(0.01%TFA)
 Gradient: 5% to 95%B within 2.0 min
 Flow Rate :1.2ml/min
 Column :Shim-pack Scepter C18-120, 3.0*33mm,3um
 Oven Temperature : 45C



Integration Results for DAD1 A, Sig=214,4 Ref=off

RetTim	Width	Area	Height	Area%
3.27	0.03	2221.38	1010.69	99.94
3.50	0.06	1.23	0.27	0.06

Integration Results for DAD1 B, Sig=254,4 Ref=off

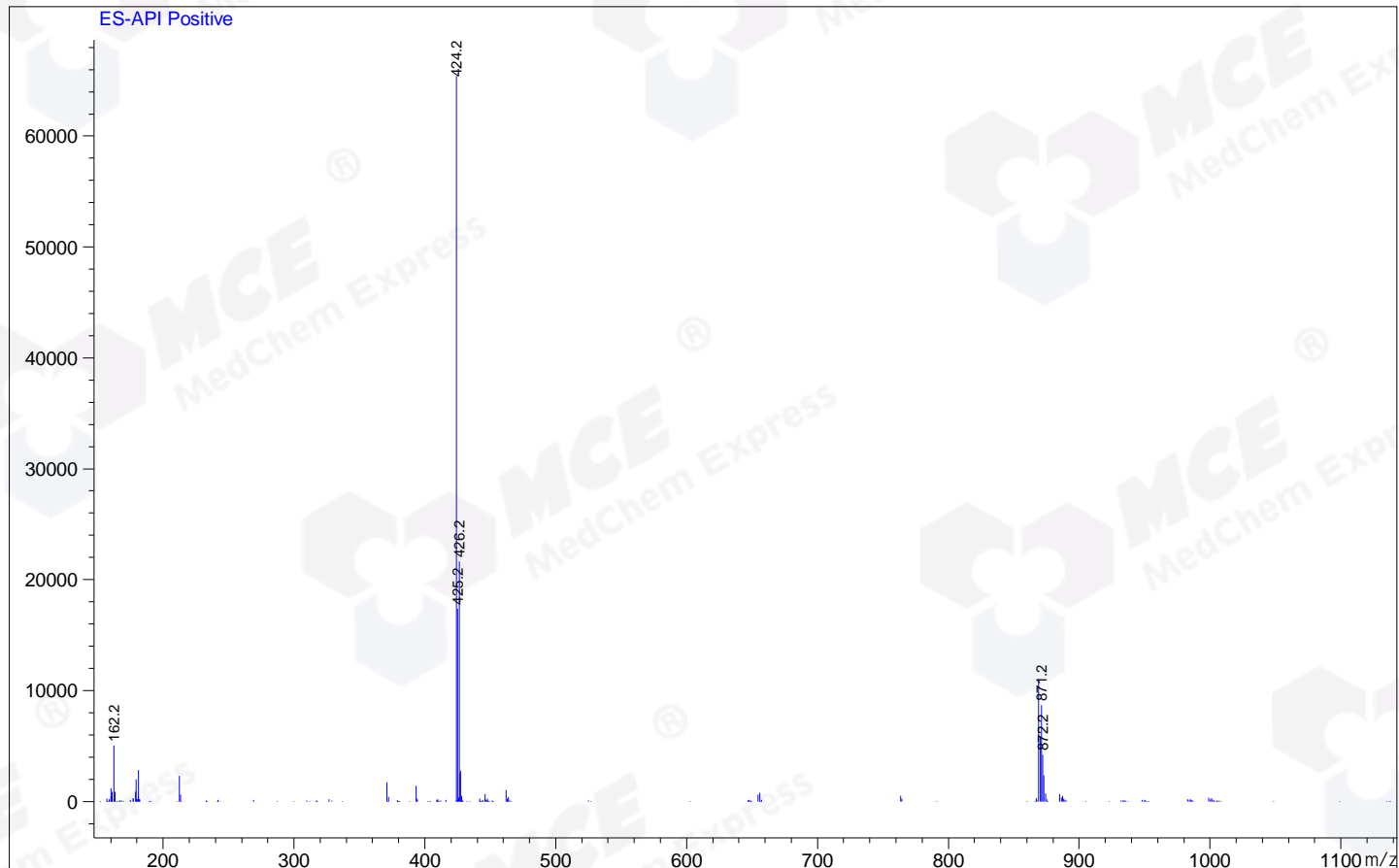
RetTim	Width	Area	Height	Area%
3.27	0.03	1171.72	533.86	99.95
3.45	0.08	0.62	0.00	0.05

Integration Results for MSD1 TIC, MS File

RetTim	Width	Area	Height	Area%
3.26	0.07	4156868.75	958329.13	100.00

Ret. Time: 3.26

<<<< POSITIVE SPECTRA >>>>



*** End of Report ***