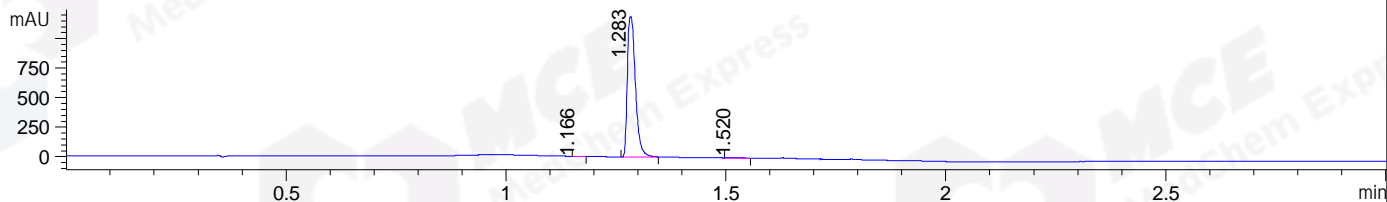
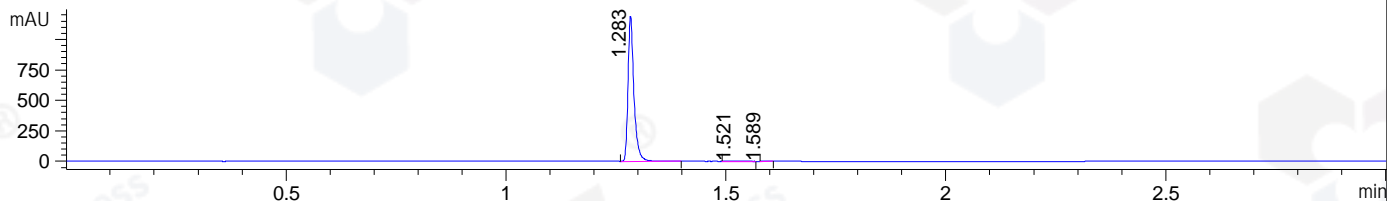


File ..\DATA\2019\20190716\630\CPK2019-715-04302.D Tgt Mass (CHM):
 Injection Date : 16 Jul 19 11:24 am +0800 Seq. Line : 31
 Sample Name : CPK2019-715-04302 Location : P1-D-07
 Acq. Operator : ZJ_1432 Inj : 1
 Spec. Reported : MS Integration Inj Volume : 1 ul
 Acq. Method : D:\Chem32\1\data\2019\20190716\630\1-POS-3MIN.M
 Analysis Method : D:\CHEM32\1\DATA\2019\20190716\630\1-POS-3MIN.M
 Catalog No : HY-13036A Batch# 04302
 Method Info : Mobile Phase: A: water(0.01%TFA) B:ACN(0.01%TFA)
 Gradient: 5% to 95%B within 1.3 min
 Flow Rate :1.8ml/min
 Column :SunFire C18, 4.6*50mm,3.5um A-RP-433
 Oven Temperature : 45

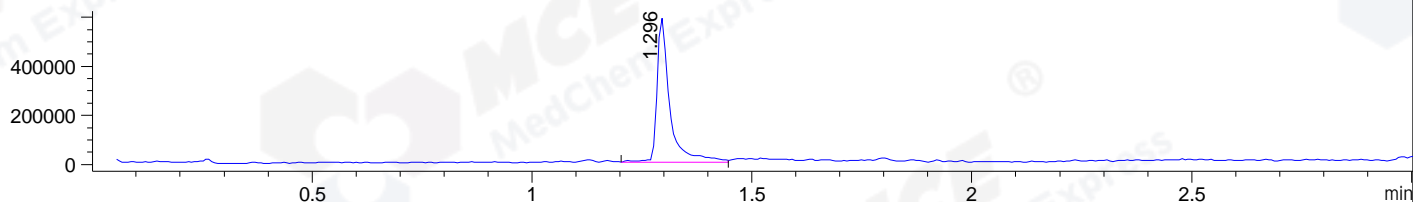
DAD1 B, Sig=214,4 Ref=off



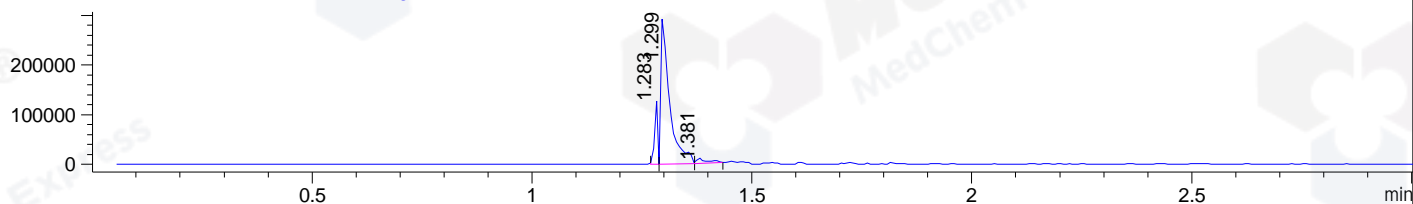
DAD1 C, Sig=254,4 Ref=off



MSD1 TIC, MS File ES-API, Pos, Scan, Frag: 70



Ion 387.4602, MSD1 387.4602, Target Mass 386.4602 +H Positive, EIC=387.16:388.16



Integration Results for DAD1 B, Sig=214,4 Ref=off

RetTim	Width	Area	Height	Area%	MS (+)
1.17	0.02	2.25	2.41	0.15	ND
1.28	0.02	1518.28	1188.90	99.47	387
1.52	0.02	5.89	4.16	0.39	387

Integration Results for DAD1 C, Sig=254,4 Ref=off

RetTim	Width	Area	Height	Area%	MS (+)
1.28	0.02	1121.51	1192.94	99.73	387
1.52	0.03	2.34	1.37	0.21	387
1.59	0.02	0.68	0.68	0.06	387

Integration Results for MSD1 TIC, MS File

RetTim	Width	Area	Height	Area%	MS (+)
1.30	0.03	1203077.13	588358.31	100.00	387

Ret. Time: 1.30

<<<< POSITIVE SPECTRA >>>>

ES-API Positive

