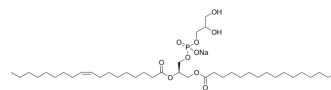


POPG sodium salt

Cat. No.:	HY-130463
CAS No.:	268550-95-4
Molecular Formula:	C ₄₀ H ₇₆ NaO ₁₀ P
Molecular Weight:	770.99
Target:	Liposome
Pathway:	Metabolic Enzyme/Protease
Storage:	-20°C, sealed storage, away from moisture * In solvent : -80°C, 6 months; -20°C, 1 month (sealed storage, away from moisture)



SOLVENT & SOLUBILITY

In Vitro

DMSO : 25 mg/mL (32.43 mM; ultrasonic and warming and heat to 60°C)
Ethanol : 8.33 mg/mL (10.80 mM; Need ultrasonic)

Preparing Stock Solutions	Solvent Concentration	Mass		
		1 mg	5 mg	10 mg
	1 mM	1.2970 mL	6.4852 mL	12.9703 mL
	5 mM	0.2594 mL	1.2970 mL	2.5941 mL
	10 mM	0.1297 mL	0.6485 mL	1.2970 mL

Please refer to the solubility information to select the appropriate solvent.

In Vivo

- Add each solvent one by one: 10% DMSO >> 40% PEG300 >> 5% Tween-80 >> 45% saline
Solubility: ≥ 1.25 mg/mL (1.62 mM); Clear solution
- Add each solvent one by one: 10% DMSO >> 90% (20% SBE-β-CD in saline)
Solubility: 1.25 mg/mL (1.62 mM); Suspended solution; Need ultrasonic

BIOLOGICAL ACTIVITY

Description

POPG sodium salt is a phospholipid molecule having one negative charge, which can interact with the positive charges of peptides^[1].

REFERENCES

- [1]. Kim MR, et al. Co-Encapsulation and Co-Delivery of Peptide Drugs via Polymeric Nanoparticles. *Polymers (Basel)*. 2019;11(2):288. Published 2019 Feb 8.

Caution: Product has not been fully validated for medical applications. For research use only.

Tel: 609-228-6898

Fax: 609-228-5909

E-mail: tech@MedChemExpress.com

Address: 1 Deer Park Dr, Suite Q, Monmouth Junction, NJ 08852, USA