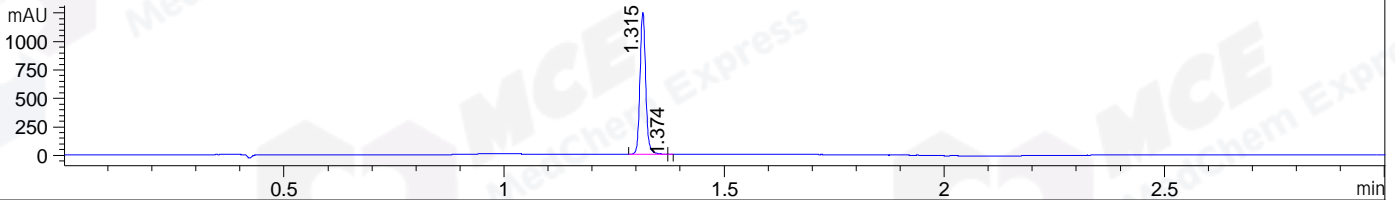
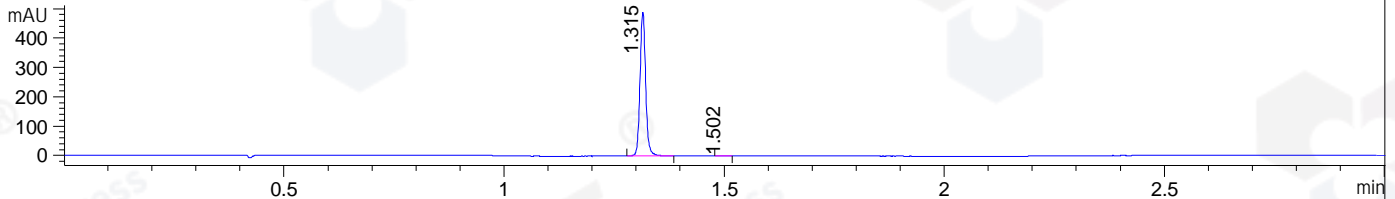


File ..1\DATA\2020\20200402\910\BIZ2020-330-WMX7.D Tgt Mass (CHM):  
 Injection Date : 2 Apr 20 3:23 pm +0800 Seq. Line : 83  
 Sample Name : BIZ2020-330-WMX7 Location : P1-B-08  
 Acq. Operator : ZJ\_1432 Inj : 1  
 Spec. Reported : MS Integration Inj Volume : 1 ul  
 Acq. Method : D:\Chem32\1\data\2020\20200402\910\1-POS-3MIN.M  
 Analysis Method : D:\CHEM32\1\DATA\2020\20200402\910\1-POS-3MIN.M  
 Catalog No : HY-130603 Batch# 62188  
 Method Info : Mobile Phase: A: water(0.01%TFA) B:ACN(0.01%TFA)  
 Gradient: 5% to 95%B within 1.3 min  
 Flow Rate :1.8ml/min  
 Column :SunFire C18, 4.6\*50mm,3.5um A-RP-433  
 Oven Temperature : 45□

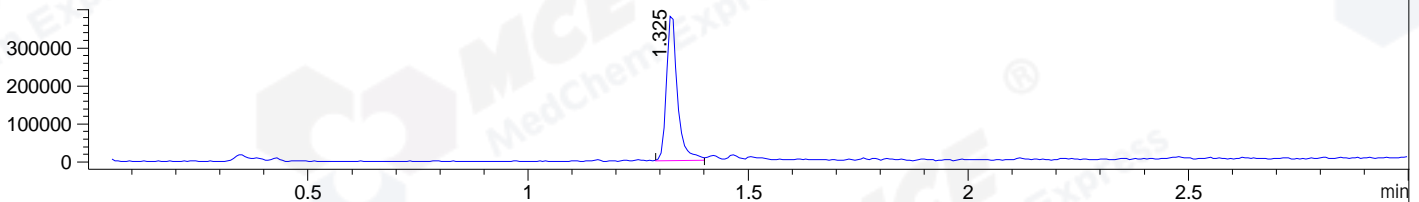
DAD1 B, Sig=214,4 Ref=off



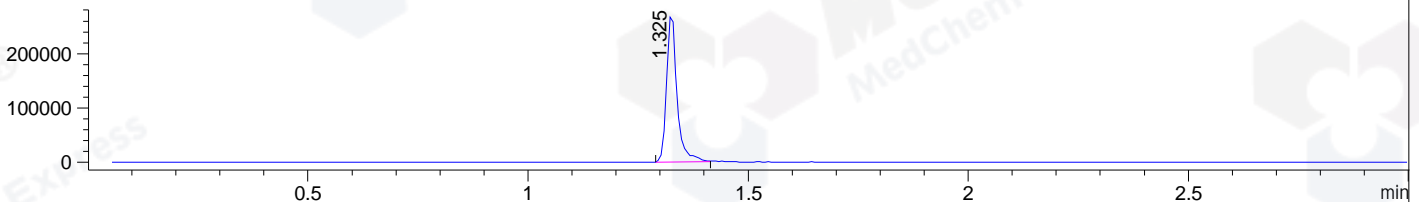
DAD1 C, Sig=254,4 Ref=off



MSD1 TIC, MS File ES-API, Pos, Scan, Frag: 70



Ion 357, MSD1 357, Target Mass 356 +H Positive, EIC=356.7:357.7



Integration Results for DAD1 B, Sig=214,4 Ref=off

RetTim	Width	Area	Height	Area%	MS (+)
1.32	0.02	1125.57	1248.01	99.96	357
1.37	0.01	0.45	1.15	0.04	357

Integration Results for DAD1 C, Sig=254,4 Ref=off

RetTim	Width	Area	Height	Area%	MS (+)
1.32	0.01	435.91	490.61	99.84	357
1.50	0.02	0.70	0.63	0.16	491

Integration Results for MSD1 TIC, MS File

RetTim	Width	Area	Height	Area%	MS (+)
1.33	0.03	670405.44	394726.09	100.00	357

Ret. Time: 1.33

<<<< POSITIVE SPECTRA >>>>

ES-API Positive

