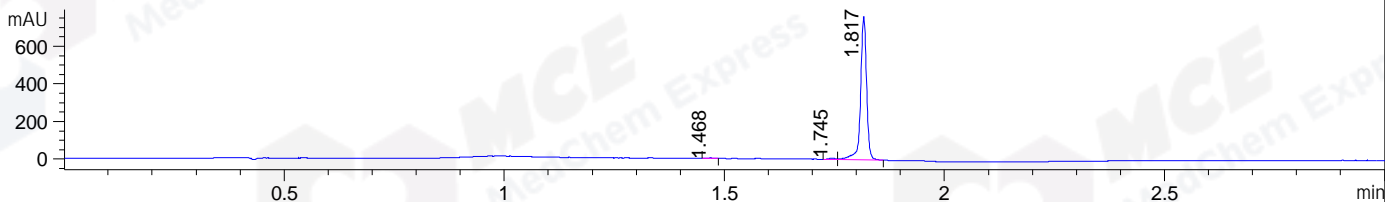
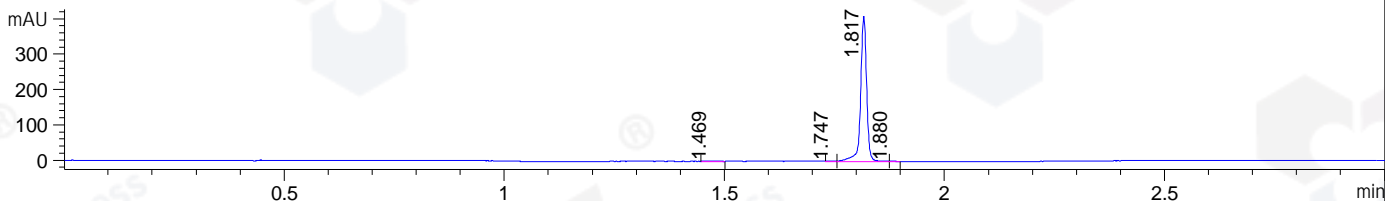


File ..\DATA\2020\20200402\910\BIZ2020-402-CXL2.D Tgt Mass (CHM):
 Injection Date : 2 Apr 20 7:08 pm +0800 Seq. Line : 122
 Sample Name : BIZ2020-402-CXL2 Location : P1-D-05
 Acq. Operator : ZJ_1432 Inj : 1
 Spec. Reported : MS Integration Inj Volume : 0.3 ul
 Acq. Method : D:\Chem32\1\data\2020\20200402\910\1-POS-3MIN.M
 Analysis Method : D:\CHEM32\1\DATA\2020\20200402\910\1-POS-3MIN.M
 Catalog No : HY-130605 Batch# 62230
 Method Info : Mobile Phase: A: water(0.01%TFA) B:ACN(0.01%TFA)
 Gradient: 5% to 95%B within 1.3 min
 Flow Rate :1.8ml/min
 Column :SunFire C18, 4.6*50mm,3.5um A-RP-433
 Oven Temperature : 45

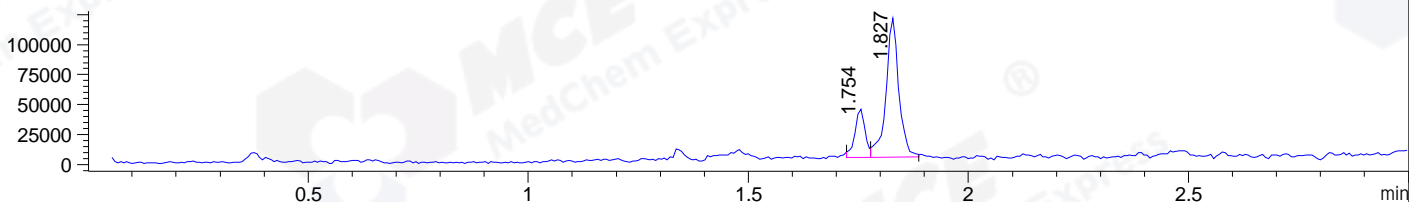
DAD1 B, Sig=214,4 Ref=off



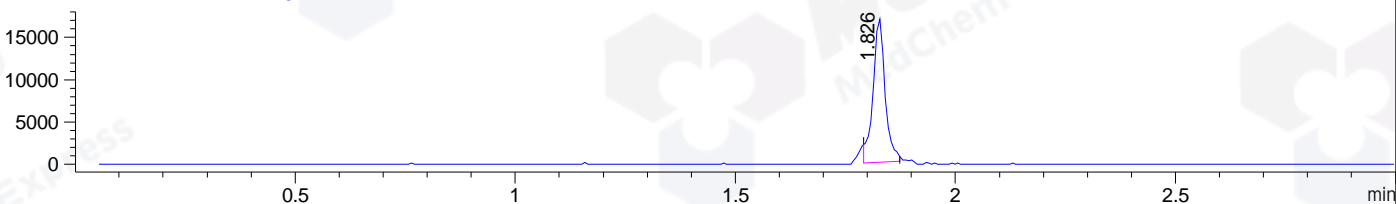
DAD1 C, Sig=254,4 Ref=off



MSD1 TIC, MS File ES-API, Pos, Scan, Frag: 70



Ion 417, MSD1 417, Target Mass 416 +H Positive, EIC=416.7:417.7



Integration Results for DAD1 B, Sig=214,4 Ref=off

RetTim	Width	Area	Height	Area%	MS (+)
1.47	0.02	2.40	2.34	0.33	491
1.75	0.02	7.48	7.45	1.02	301
1.82	0.02	724.18	764.56	98.66	417

Integration Results for DAD1 C, Sig=254,4 Ref=off

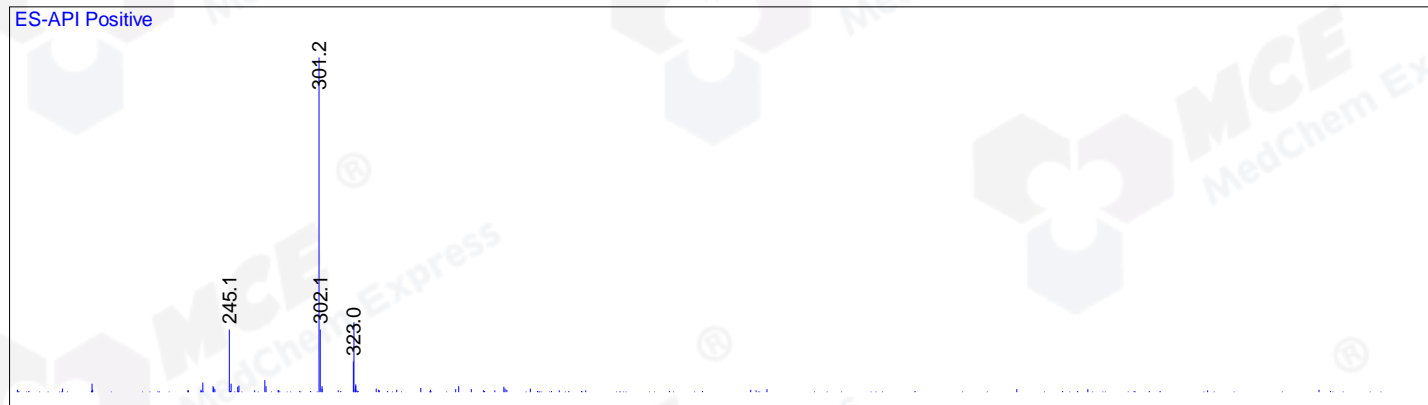
RetTim	Width	Area	Height	Area%	MS (+)
1.47	0.03	1.94	1.22	0.49	491
1.75	0.02	1.36	1.40	0.34	301
1.82	0.02	390.52	411.34	98.98	417
1.88	0.01	0.72	0.80	0.18	ND

Integration Results for MSD1 TIC, MS File

RetTim	Width	Area	Height	Area%	MS (+)
1.75	0.02	63736.36	40805.11	21.39	301
1.83	0.03	234229.27	116287.31	78.61	417

Ret. Time: 1.75

<<<< POSITIVE SPECTRA >>>>



Ret. Time: 1.83

