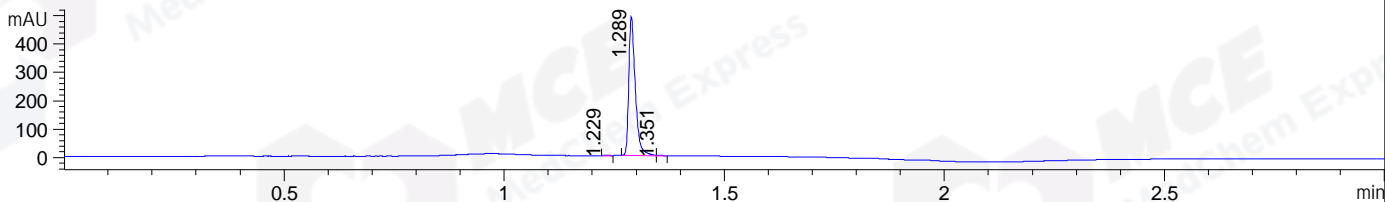
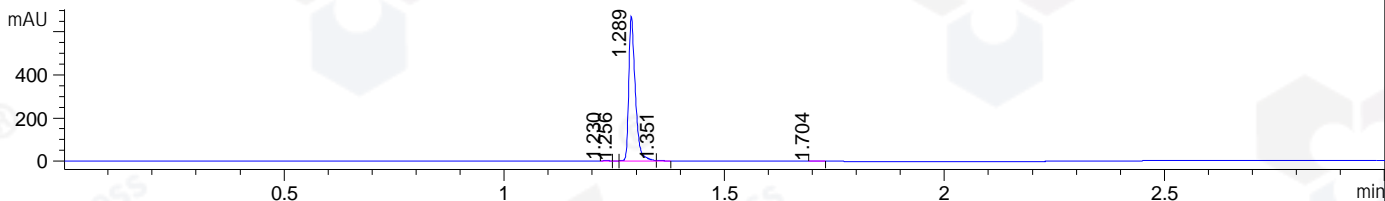


File ..1\DATA\2019\20190918\713\BIZ2019-918-SCH1.D Tgt Mass (CHM):
 Injection Date : 18 Sep 19 5:35 pm +0800 Seq. Line : 109
 Sample Name : BIZ2019-918-SCH1 Location : P1-C-04
 Acq. Operator : bgd_1571 Inj : 1
 Spec. Reported : MS Integration Inj Volume : 1 ul
 Acq. Method : D:\Chem32\1\data\2019\20190918\713\1-POS-3MIN.M
 Analysis Method : D:\CHEM32\1\DATA\2019\20190918\713\1-POS-3MIN.M
 Catalog No : HY-13062 Batch#45907
 Method Info : Mobile Phase: A: water(0.01%TFA) B:ACN(0.01%TFA)
 Gradient: 5% to 95%B within 1.3 min
 Flow Rate :1.8ml/min
 Column :SunFire C18, 4.6*50mm,3.5um A-RP-433
 Oven Temperature : 45□

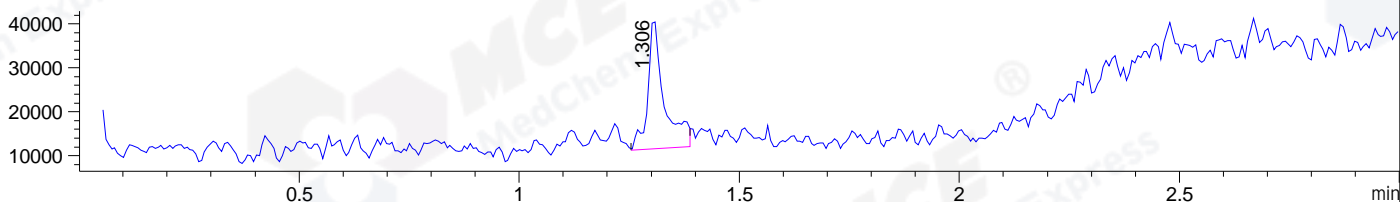
DAD1 B, Sig=214,4 Ref=off



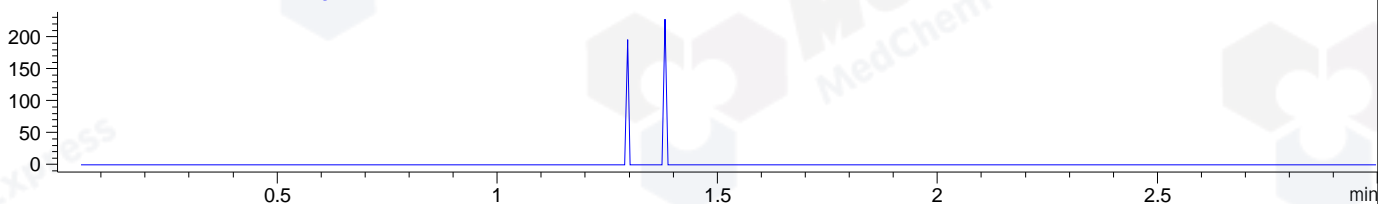
DAD1 C, Sig=254,4 Ref=off



MSD1 TIC, MS File ES-API, Pos, Scan, Frag: 70



Ion 564.16, MSD1 564.16, Target Mass 563.16 +H Positive, EIC=563.86:564.86



Integration Results for DAD1 B, Sig=214,4 Ref=off

RetTim	Width	Area	Height	Area%	MS (+)
1.23	0.01	1.45	1.94	0.29	130
1.29	0.02	504.96	490.57	99.37	130
1.35	0.01	1.75	2.06	0.34	130

Integration Results for DAD1 C, Sig=254,4 Ref=off

RetTim	Width	Area	Height	Area%	MS (+)
1.23	0.02	2.72	2.94	0.39	130
1.26	0.01	1.05	1.37	0.15	130
1.29	0.02	695.20	672.60	98.96	130
1.35	0.02	2.77	3.02	0.39	130
1.70	0.02	0.77	0.61	0.11	130

Integration Results for MSD1 TIC, MS File

RetTim	Width	Area	Height	Area%	MS (+)
1.31	0.04	75441.75	29760.19	100.00	130

Ret. Time: 1.31

<<<< POSITIVE SPECTRA >>>>

ES-API Positive

