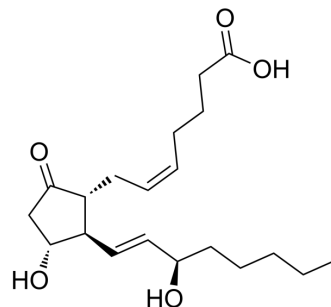


15(R)-Prostaglandin E2

Cat. No.:	HY-130694
CAS No.:	38873-82-4
Molecular Formula:	C ₂₀ H ₃₂ O ₅
Molecular Weight:	352.47
Target:	Others
Pathway:	Others
Storage:	Please store the product under the recommended conditions in the Certificate of Analysis.



BIOLOGICAL ACTIVITY

Description

15(R)-Prostaglandin E2 is a prostaglandin derivative that can be isolated from the Plexaura homomalla ^[1].

REFERENCES

[1]. Light RJ, et al. Identification of prostaglandins in the gorgonian, Plexaura homomalla. Eur J Biochem. 1972;28(2):232-240.

Caution: Product has not been fully validated for medical applications. For research use only.

Tel: 609-228-6898

Fax: 609-228-5909

E-mail: tech@MedChemExpress.com

Address: 1 Deer Park Dr, Suite Q, Monmouth Junction, NJ 08852, USA