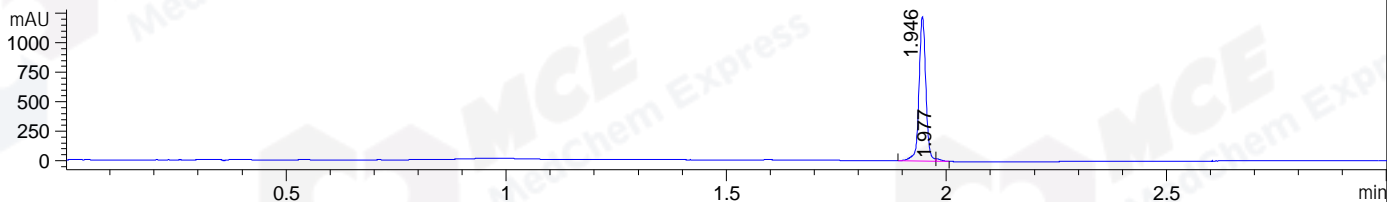
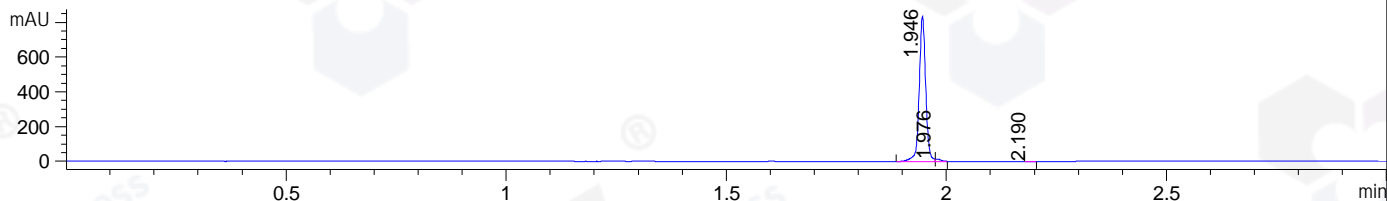


File ..\DATA\2018\20181018\460\CPK2018-O18-19328.D Tgt Mass (CHM):
 Injection Date : 18 Oct 18 5:37 pm +0800 Seq. Line : 3
 Sample Name : CPK2018-O18-19328 Location : P1-A-04
 Acq. Operator : LQ_1052 Inj : 1
 Spec. Reported : MS Integration Inj Volume : 1 ul
 Acq. Method : D:\Chem32\1\data\2018\20181018\460\1-POS-3MIN-1.M
 Analysis Method : D:\CHEM32\1\DATA\2018\20181018\460\1-POS-3MIN-1.M
 Catalog No : HY-13070 Batch#19328 A-RP-314
 Method Info : Mobile Phase: A: water(0.01%TFA) B:ACN(0.01%TFA)
 Gradient: 5% to 95%B within 1.3 min
 Flow Rate :1.8ml/min
 Column :SunFire C18, 4.6*50mm,3.5um A-RP-314
 Oven Temperature : 45

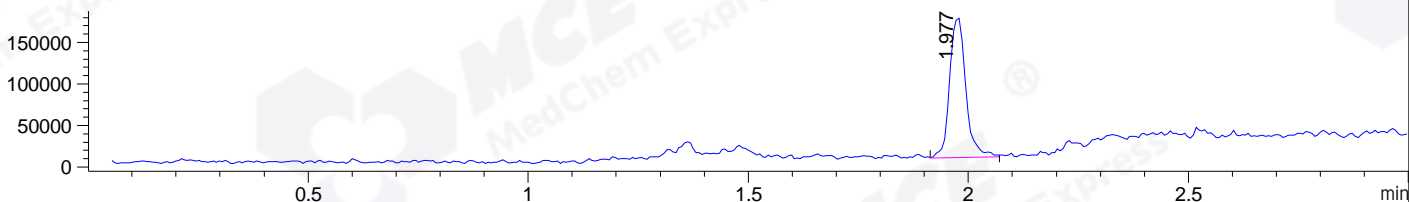
DAD1 B, Sig=214,4 Ref=off



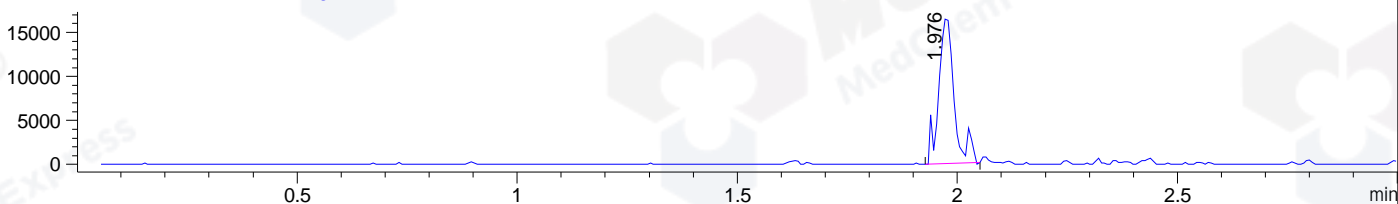
DAD1 C, Sig=254,4 Ref=off



MSD1 TIC, MS File ES-API, Pos, Scan, Frag: 70



Ion 468.3, MSD1 468.3, Target Mass 467.3 +H Positive, EIC=468:469



Integration Results for DAD1 B, Sig=214,4 Ref=off

RetTim	Width	Area	Height	Area%	MS (+)
1.95	0.02	1327.00	1227.96	98.82	467
1.98	0.01	15.85	21.10	1.18	469

Integration Results for DAD1 C, Sig=254,4 Ref=off

RetTim	Width	Area	Height	Area%	MS (+)
1.95	0.02	859.41	836.41	98.68	467
1.98	0.01	11.24	13.79	1.29	469
2.19	0.01	0.25	0.29	0.03	159

Integration Results for MSD1 TIC, MS File

RetTim	Width	Area	Height	Area%	MS (+)
1.98	0.04	435214.63	170692.17	100.00	467

Ret. Time: 1.98

<<<< POSITIVE SPECTRA >>>>

ES-API Positive

