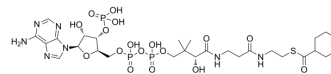


Cyclohexanoyl coenzyme A

Cat. No.:	HY-130755
CAS No.:	5960-12-3
Molecular Formula:	C ₂₈ H ₄₆ N ₇ O ₁₇ P ₃ S
Molecular Weight:	877.69
Target:	Others
Pathway:	Others
Storage:	-20°C, sealed storage, away from moisture * In solvent : -80°C, 6 months; -20°C, 1 month (sealed storage, away from moisture)



BIOLOGICAL ACTIVITY

Description	Cyclohexanoyl coenzyme A is the active form of cyclohexane carboxylic acid (CHC) from anaerobic degradation in <i>Rhodospseudomonas palustris</i> ^[1] .
-------------	--

REFERENCES

[1]. Kung JW, et al. Enzymes involved in a novel anaerobic cyclohexane carboxylic acid degradation pathway. *J Bacteriol.* 2014 Oct;196(20):3667-74.

Caution: Product has not been fully validated for medical applications. For research use only.

Tel: 609-228-6898

Fax: 609-228-5909

E-mail: tech@MedChemExpress.com

Address: 1 Deer Park Dr, Suite Q, Monmouth Junction, NJ 08852, USA