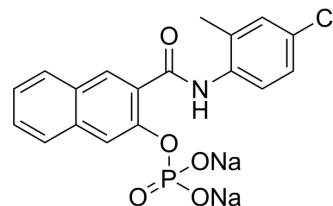


## Naphthol AS-TR phosphate disodium

<b>Cat. No.:</b>	HY-130767A		
<b>CAS No.:</b>	4264-93-1		
<b>Molecular Formula:</b>	C <sub>18</sub> H <sub>13</sub> ClNNa <sub>2</sub> O <sub>5</sub> P		
<b>Molecular Weight:</b>	435.71		
<b>Target:</b>	Biochemical Assay Reagents		
<b>Pathway:</b>	Others		
<b>Storage:</b>	Powder	-20°C	3 years
	In solvent	-80°C	6 months
		-20°C	1 month



### SOLVENT & SOLUBILITY

#### In Vitro

H<sub>2</sub>O : 100 mg/mL (229.51 mM; Need ultrasonic)

DMSO : 50 mg/mL (114.76 mM; ultrasonic and warming and heat to 60°C)

	Solvent Concentration	Mass		
		1 mg	5 mg	10 mg
Preparing Stock Solutions	1 mM	2.2951 mL	11.4755 mL	22.9510 mL
	5 mM	0.4590 mL	2.2951 mL	4.5902 mL
	10 mM	0.2295 mL	1.1476 mL	2.2951 mL

Please refer to the solubility information to select the appropriate solvent.

### BIOLOGICAL ACTIVITY

#### Description

Naphthol AS-TR Phosphate disodium is a water-soluble dye commonly used as an enzymatic substrate in various biochemical assays to detect alkaline phosphatase activity. Naphthol AS-TR Phosphate disodium has unique chemical properties that allow it to be hydrolyzed by alkaline phosphatase, forming a colored product that can be detected spectrophotometrically. This makes it a useful tool for monitoring enzyme activity in biological samples such as serum or urine.

### REFERENCES

[1]. V Souvannavong, et al. Expression of alkaline phosphatase by a B-cell hybridoma and its modulation during cell growth and apoptosis, Immunol Lett. 1995 Sep;47(3):163-70.

---

**Caution: Product has not been fully validated for medical applications. For research use only.**

Tel: 609-228-6898

Fax: 609-228-5909

E-mail: [tech@MedChemExpress.com](mailto:tech@MedChemExpress.com)

Address: 1 Deer Park Dr, Suite Q, Monmouth Junction, NJ 08852, USA