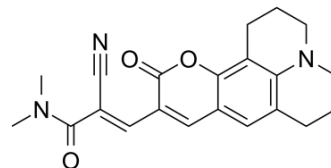


GSHtracer

Cat. No.:	HY-131013
CAS No.:	1479071-34-5
Molecular Formula:	C ₂₁ H ₂₁ N ₃ O ₃
Molecular Weight:	363.41
Target:	Others
Pathway:	Others
Storage:	Please store the product under the recommended conditions in the Certificate of Analysis.



BIOLOGICAL ACTIVITY

Description	GSHtracer is a ratiometric probe for measuring of GSH levels. GSHtracer exhibits Ex/Em from 520/580 nm to 430/510 nm (upon GSH binding) ^[1] .
--------------------	--

REFERENCES

[1]. Eui Man Jeong, et al. Real-Time Monitoring of Glutathione in Living Cells Reveals that High Glutathione Levels Are Required to Maintain Stem Cell Function. Stem Cell Reports. 2018 Feb 13;10(2):600-614.

Caution: Product has not been fully validated for medical applications. For research use only.

Tel: 609-228-6898

Fax: 609-228-5909

E-mail: tech@MedChemExpress.com

Address: 1 Deer Park Dr, Suite Q, Monmouth Junction, NJ 08852, USA