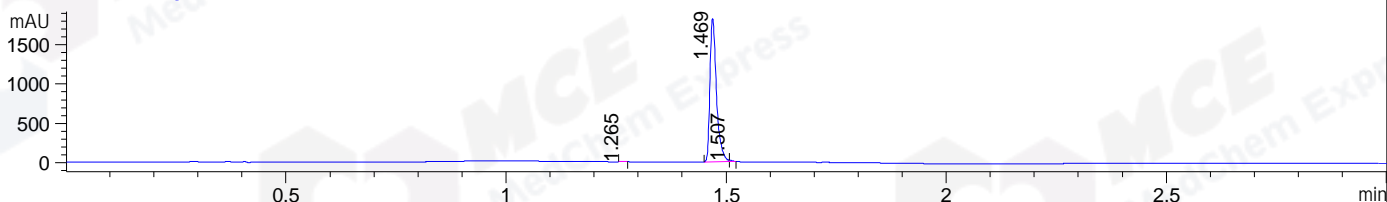
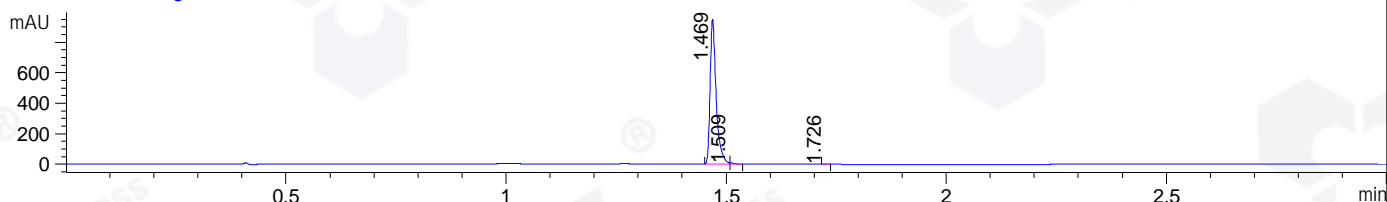


File ..\DATA\2020\20200921\1112\BIZ2020-918-WLQ6.D Tgt Mass (CHM):
 Injection Date : 21 Sep 20 12:41 pm +0800 Seq. Line : 49
 Sample Name : BIZ2020-918-WLQ6 Location : P1-B-06
 Acq. Operator : zyj_1547 Inj : 1
 Spec. Reported : MS Integration Inj Volume : 1 ul
 Acq. Method : D:\Chem32\1\data\2020\20200921\1112\1-POS-3MIN.M
 Analysis Method : D:\CHEM32\1\DATA\2020\20200921\1112\1-POS-3MIN.M
 CAS NO. : 2415003-97-1
 Method Info : Mobile Phase: A: water(0.01%TFA) B:ACN(0.01%TFA)
 Gradient: 5% to 95%B within 1.3 min
 Flow Rate :1.8ml/min
 Column :SunFire C18, 4.6*50mm,3.5um A-RP-624

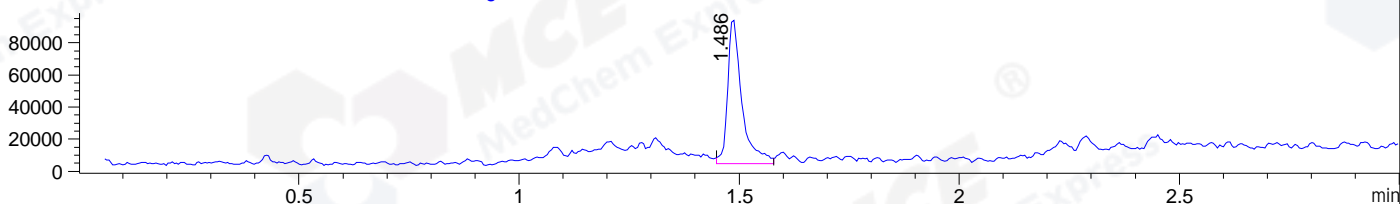
DAD1 B, Sig=214,4 Ref=off



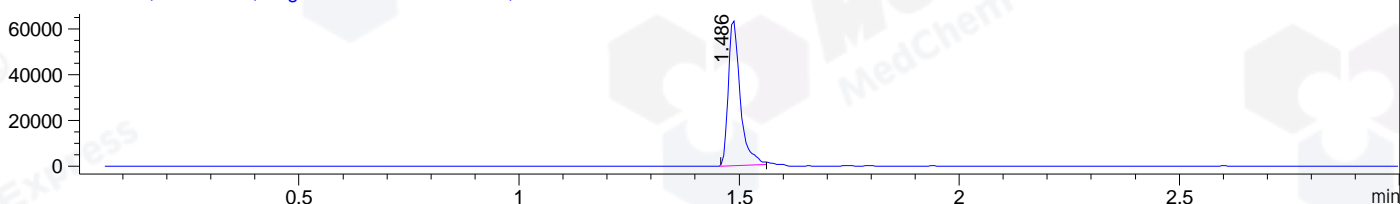
DAD1 C, Sig=254,4 Ref=off



MSD1 TIC, MS File ES-API, Pos, Scan, Frag: 70



Ion 353, MSD1 353, Target Mass 352 +H Positive, EIC=352.7:353.7



Integration Results for DAD1 B, Sig=214,4 Ref=off

RetTim	Width	Area	Height	Area%	MS(+)
1.27	0.01	3.92	5.92	0.21	137
1.47	0.02	1886.17	1822.15	99.40	353
1.51	0.01	7.43	16.81	0.39	353

Integration Results for DAD1 C, Sig=254,4 Ref=off

RetTim	Width	Area	Height	Area%	MS(+)
1.47	0.02	908.18	950.96	99.42	353
1.51	0.01	4.74	8.61	0.52	353
1.73	0.01	0.53	0.75	0.06	ND

Integration Results for MSD1 TIC, MS File

RetTim	Width	Area	Height	Area%	MS(+)
1.49	0.03	203115.72	90399.27	100.00	353

Ret. Time: 1.49

<<<< POSITIVE SPECTRA >>>>

ES-API Positive

