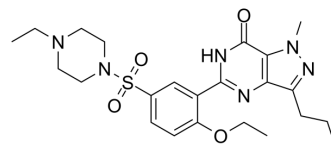


## Homo Sildenafil

<b>Cat. No.:</b>	HY-131100
<b>CAS No.:</b>	642928-07-2
<b>Molecular Formula:</b>	C <sub>23</sub> H <sub>32</sub> N <sub>6</sub> O <sub>4</sub> S
<b>Molecular Weight:</b>	488.6
<b>Target:</b>	Phosphodiesterase (PDE)
<b>Pathway:</b>	Metabolic Enzyme/Protease
<b>Storage:</b>	Please store the product under the recommended conditions in the Certificate of Analysis.



### BIOLOGICAL ACTIVITY

<b>Description</b>	Homo Sildenafil, an analog of Sildenafil, acts as a phosphodiesterase inhibitor <sup>[1]</sup> .
--------------------	--

### REFERENCES

[1]. Jackie D Corbin, et al. Vardenafil: Structural Basis for Higher Potency Over Sildenafil in Inhibiting cGMP-specific phosphodiesterase-5 (PDE5). *Neurochem Int.* 2004 Nov;45(6):859-63.

**Caution: Product has not been fully validated for medical applications. For research use only.**

Tel: 609-228-6898

Fax: 609-228-5909

E-mail: [tech@MedChemExpress.com](mailto:tech@MedChemExpress.com)

Address: 1 Deer Park Dr, Suite Q, Monmouth Junction, NJ 08852, USA