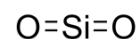
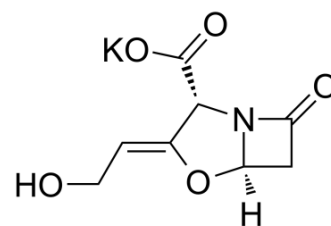


## Potassium clavulanate mixture with silicon dioxide (1:1)

Cat. No.:	HY-131164
Molecular Formula:	C <sub>8</sub> H <sub>8</sub> KNO <sub>7</sub> Si
Molecular Weight:	297.34
Target:	Antibiotic
Pathway:	Anti-infection
Storage:	Please store the product under the recommended conditions in the COA.



### BIOLOGICAL ACTIVITY

#### Description

Potassium clavulanate mixture with silicon dioxide (1:1) is a powdered mixture of 1 part Potassium clavulanate to 1 part Silicon dioxide<sup>[1]</sup>.

### REFERENCES

[1]. Michael Gale Ramsey, et al. Pharmaceutical formulations comprising amoxicillin and clavulanate. WO2004110441A1.

**Caution: Product has not been fully validated for medical applications. For research use only.**

Tel: 609-228-6898

Fax: 609-228-5909

E-mail: [tech@MedChemExpress.com](mailto:tech@MedChemExpress.com)

Address: 1 Deer Park Dr, Suite Q, Monmouth Junction, NJ 08852, USA