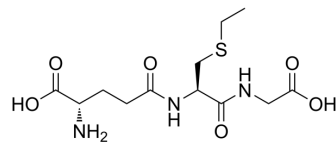


## S-Ethylglutathione

Cat. No.:	HY-131390
CAS No.:	24425-52-3
Molecular Formula:	C <sub>12</sub> H <sub>21</sub> N <sub>3</sub> O <sub>6</sub> S
Molecular Weight:	335.38
Target:	Others
Pathway:	Others
Storage:	Please store the product under the recommended conditions in the Certificate of Analysis.



### BIOLOGICAL ACTIVITY

Description	S-Ethylglutathione is a biochemical <sup>[1]</sup> .
-------------	--

### REFERENCES

[1]. Ballatori, N et al. An endogenous ATP-sensitive glutathione S-conjugate efflux mechanism in *Xenopus laevis* oocytes. *The American journal of physiology* vol. 270,5 Pt 2 (1996): R1156-62.

**Caution: Product has not been fully validated for medical applications. For research use only.**

Tel: 609-228-6898

Fax: 609-228-5909

E-mail: tech@MedChemExpress.com

Address: 1 Deer Park Dr, Suite Q, Monmouth Junction, NJ 08852, USA