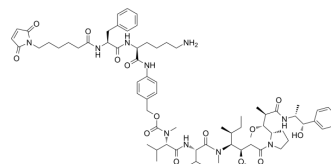


Mc-Phe-Lys-PAB-MMAE

Cat. No.:	HY-131451
CAS No.:	646502-54-7
Molecular Formula:	C ₇₂ H ₁₀₆ N ₁₀ O ₁₄
Molecular Weight:	1335.67
Target:	Drug-Linker Conjugates for ADC
Pathway:	Antibody-drug Conjugate/ADC Related
Storage:	Please store the product under the recommended conditions in the Certificate of Analysis.



BIOLOGICAL ACTIVITY

Description	Mc-Phe-Lys-PAB-MMAE (Compound 2) is a drug-linker conjugate for ADC, and can be used for synthesis of ADCs ^[1] .
-------------	---

REFERENCES

[1]. Doronina SO, et al. Development of potent monoclonal antibody auristatin conjugates for cancer therapy. Nat Biotechnol. 2003 Jul;21(7):778-84.

Caution: Product has not been fully validated for medical applications. For research use only.

Tel: 609-228-6898

Fax: 609-228-5909

E-mail: tech@MedChemExpress.com

Address: 1 Deer Park Dr, Suite Q, Monmouth Junction, NJ 08852, USA