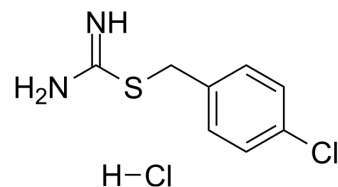


## MP265

Cat. No.:	HY-131583
CAS No.:	544-47-8
Molecular Formula:	C <sub>8</sub> H <sub>10</sub> Cl <sub>2</sub> N <sub>2</sub> S
Molecular Weight:	237.15
Target:	Others
Pathway:	Others
Storage:	Please store the product under the recommended conditions in the Certificate of Analysis.



## BIOLOGICAL ACTIVITY

Description	MP265 (4-Chlorobenzyl carbamimidothioate hydrochloride) is a structural analogue of A22 but is less toxic. MP265 is a MreB inhibitor <sup>[1]</sup> .
IC <sub>50</sub> & Target	MreB <sup>[1]</sup>

## REFERENCES

[1]. Takacs CN, et al. MreB drives de novo rod morphogenesis in *Caulobacter crescentus* via remodeling of the cell wall. *J Bacteriol.* 2010 Mar;192(6):1671-84.

**Caution: Product has not been fully validated for medical applications. For research use only.**

Tel: 609-228-6898

Fax: 609-228-5909

E-mail: tech@MedChemExpress.com

Address: 1 Deer Park Dr, Suite Q, Monmouth Junction, NJ 08852, USA