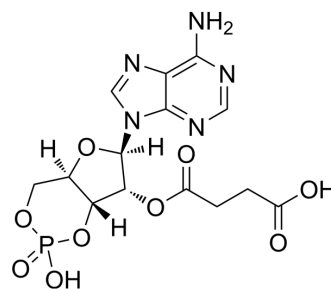


## 2'-O-Succinyl-cAMP

Cat. No.:	HY-131768
CAS No.:	36940-87-1
Molecular Formula:	C <sub>14</sub> H <sub>16</sub> N <sub>5</sub> O <sub>9</sub> P
Molecular Weight:	429.28
Target:	Cholinesterase (ChE)
Pathway:	Neuronal Signaling
Storage:	Please store the product under the recommended conditions in the Certificate of Analysis.



### BIOLOGICAL ACTIVITY

#### Description

2'-O-Succinyl-cAMP is a cAMP analog that can be covalently coupled to acetylcholinesterase. 2'-O-Succinyl-cAMP conjugate has been used as tracers in a classical heterogeneous competitive enzyme immunoassay allowing the determination of cAMP<sup>[1][2]</sup>.

### REFERENCES

- [1]. Pradelles P, et, al. Enzyme immunoassays of adenosine cyclic 3',5'-monophosphate and guanosine cyclic 3',5'-monophosphate using acetylcholinesterase. *Anal Chem.* 1989 Mar 1;61(5):447-53.
- [2]. Luttrell BM, et, al. Reaction coupling of chelation and antigen binding in the calcium ion-dependent antibody binding of cyclic AMP. *J Biol Chem.* 1991 Nov 15;266(32):21626-30.

**Caution: Product has not been fully validated for medical applications. For research use only.**

Tel: 609-228-6898

Fax: 609-228-5909

E-mail: [tech@MedChemExpress.com](mailto:tech@MedChemExpress.com)

Address: 1 Deer Park Dr, Suite Q, Monmouth Junction, NJ 08852, USA