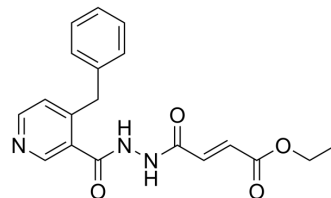


Ethyl LipotF

Cat. No.:	HY-131871
CAS No.:	1808089-27-1
Molecular Formula:	C ₁₉ H ₁₉ N ₃ O ₄
Molecular Weight:	353.37
Target:	Fat Mass and Obesity-associated Protein (FTO)
Pathway:	Metabolic Enzyme/Protease
Storage:	Please store the product under the recommended conditions in the Certificate of Analysis.



BIOLOGICAL ACTIVITY

Description

Ethyl LipotF is a selective FTO inhibitor that significant increases modified N6-methyladenosine (m6A) levels in HeLa cells in a concentration-dependent manner^[1].

REFERENCES

[1]. Toh JDW, et al. A strategy based on nucleotide specificity leads to a subfamily-selective and cell-active inhibitor of N6-methyladenosine demethylase FTO. Chem Sci. 2015 Jan 1;6(1):112-122.

Caution: Product has not been fully validated for medical applications. For research use only.

Tel: 609-228-6898

Fax: 609-228-5909

E-mail: tech@MedChemExpress.com

Address: 1 Deer Park Dr, Suite Q, Monmouth Junction, NJ 08852, USA