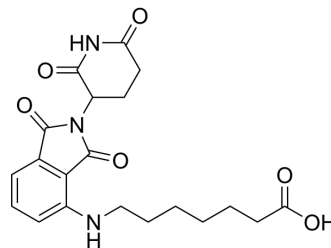


Pomalidomide-C6-COOH

| | |
|--------------------|--|
| Cat. No.: | HY-131887 |
| CAS No.: | 2225940-50-9 |
| Molecular Formula: | C ₂₀ H ₂₃ N ₃ O ₆ |
| Molecular Weight: | 401.41 |
| Target: | Ligands for E3 Ligase |
| Pathway: | PROTAC |
| Storage: | -20°C, sealed storage, away from moisture * In solvent : -80°C, 6 months; -20°C, 1 month (sealed storage, away from moisture) |



SOLVENT & SOLUBILITY

In Vitro

DMSO : 125 mg/mL (311.40 mM; Need ultrasonic)

| Concentration | Solvent | Mass | | |
|---------------------------|---------|-----------|------------|------------|
| | | 1 mg | 5 mg | 10 mg |
| Preparing Stock Solutions | 1 mM | 2.4912 mL | 12.4561 mL | 24.9122 mL |
| | 5 mM | 0.4982 mL | 2.4912 mL | 4.9824 mL |
| | 10 mM | 0.2491 mL | 1.2456 mL | 2.4912 mL |

Please refer to the solubility information to select the appropriate solvent.

BIOLOGICAL ACTIVITY

Description

Pomalidomide-C6-COOH is the pomalidomide-based cereblon (CRBN) ligand used in the recruitment of CRBN protein. Pomalidomide-6-OH can be connected to the ligand for protein by a linker to form PROTAC^[1].

REFERENCES

[1]. Xiaojuan Qu, et al. Effective degradation of EGFRL858R+T790M mutant proteins by CRBN-based PROTACs through both proteasome and autophagy/lysosome degradation systems. *Eur J Med Chem.* 2021.

Caution: Product has not been fully validated for medical applications. For research use only.

Tel: 609-228-6898

Fax: 609-228-5909

E-mail: tech@MedChemExpress.com

Address: 1 Deer Park Dr, Suite Q, Monmouth Junction, NJ 08852, USA