

**DS44960156**

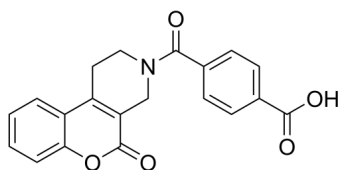
---

Cat. No.: HY-131943  
Batch No.: 228252  
CAS No.: 2361327-08-2  
Molecular Formula: C<sub>20</sub>H<sub>15</sub>NO<sub>5</sub>

#### ANALYTICAL DATA

Theoretical: C(67.89%), H(4.42%), N(3.96%)  
Result: C(67.95%), H(4.11%), N(4.07%)

Chemical Structure:



**Caution: Product has not been fully validated for medical applications. For research use only.**

Tel: 609-228-6898

Fax: 609-228-5909

E-mail: [tech@MedChemExpress.com](mailto:tech@MedChemExpress.com)

Address: 1 Deer Park Dr, Suite Q, Monmouth Junction, NJ 08852, USA